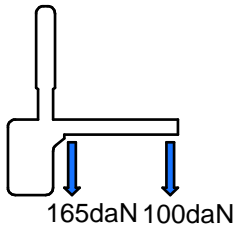


# VERTICAL ACTION

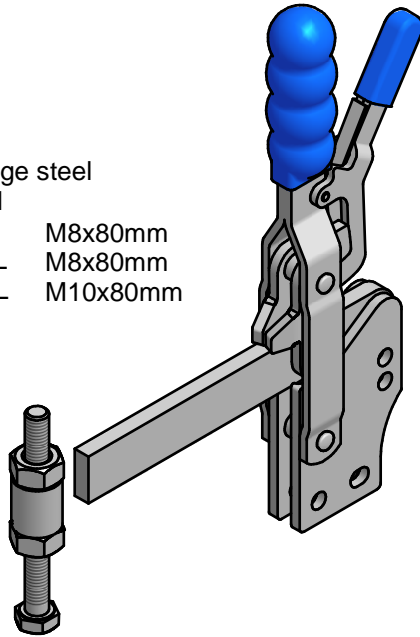
# MG2



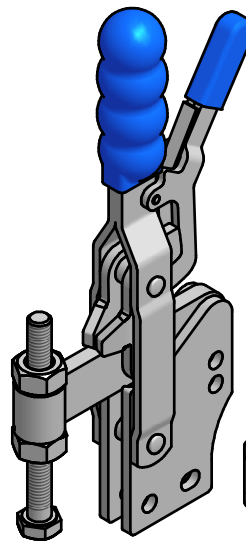
**Material:** Heavy gauge steel  
**Finish:** Zinc plated  
**Supplied with:** MG2B-SL M8x80mm  
 MG2SB-SL M8x80mm  
 MG2UB-SL M10x80mm  
**Max holding force:** 290daN  
**Weight:** 0.51Kgs  
**Clamping pressure:**



MG2-SL



MG2S-SL



MG2U-SL

