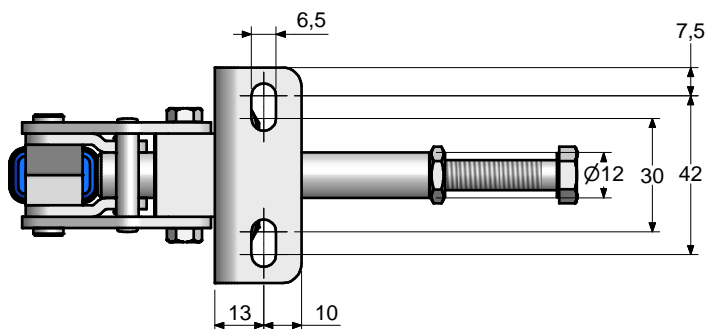
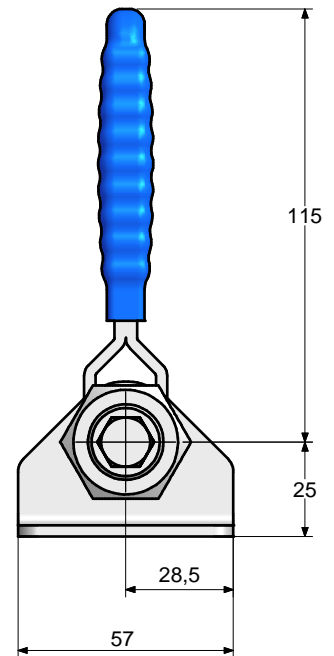
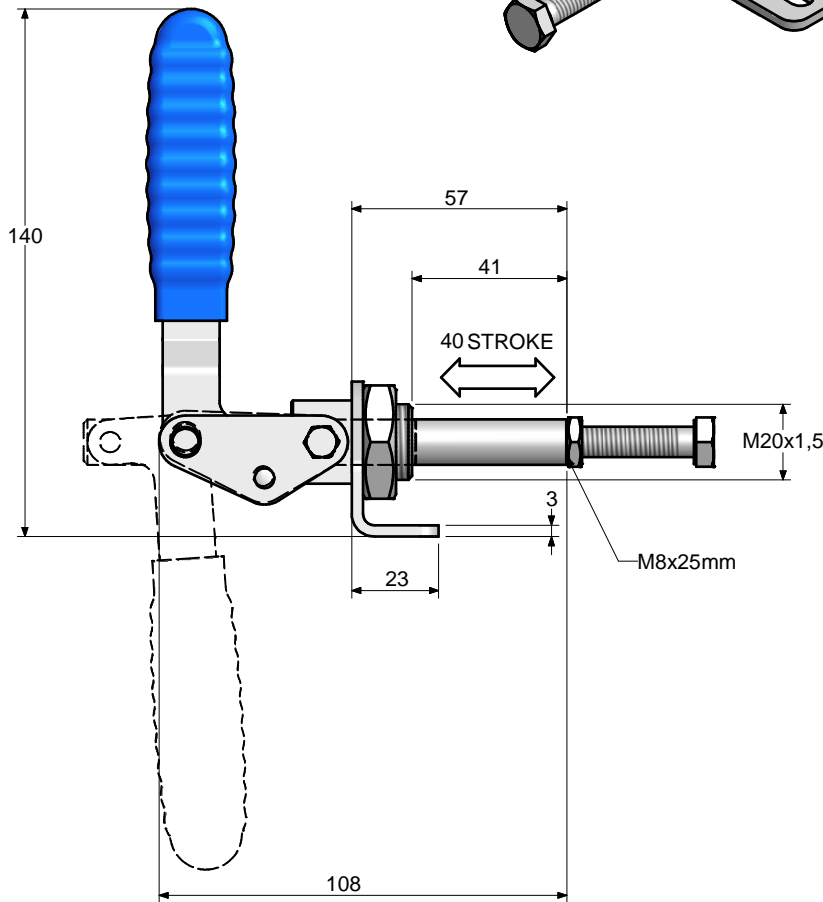
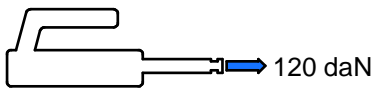
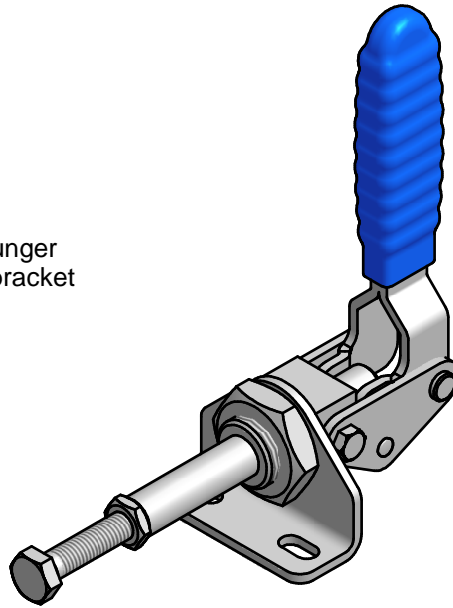


# PLUNGER ACTION

CP16



**Material:** Heavy gauge steel  
**Finish:** Zinc plated, Chemi blacked plunger  
**Supplied with:** M8x60mm spindle, Mounting bracket  
**Max holding force:** 200daN  
**Weight:** 0.35Kgs  
**Stroke:** 40mm  
**Clamping pressure:**



**CP16SS**  
Stainless steel  
option available