

# VERTICAL ACTION

HEAVY  
DUTY

M19/T



**Material:** Heavy gauge steel  
Hardened pins and bushes

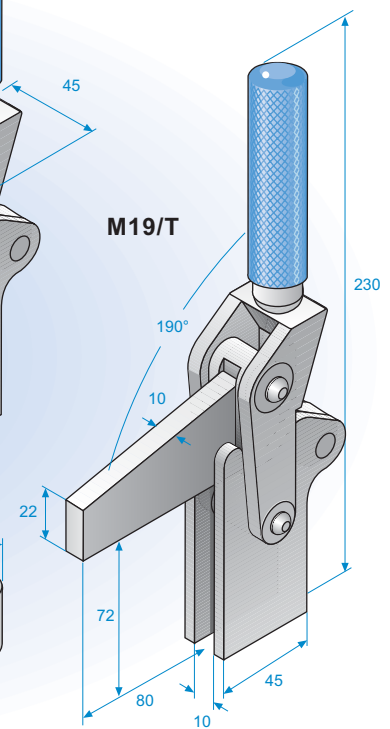
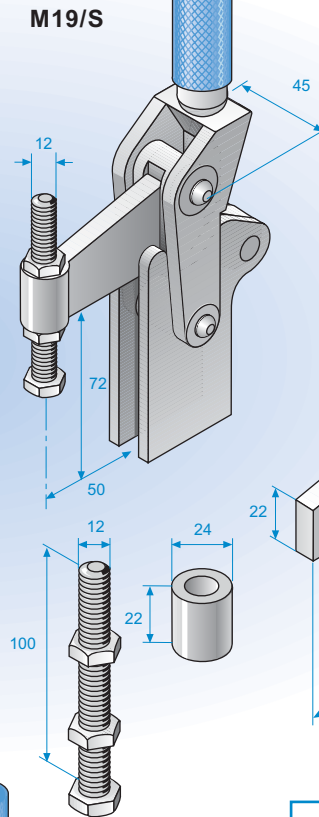
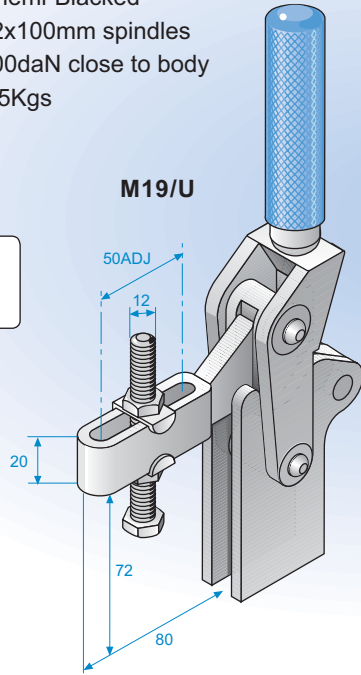
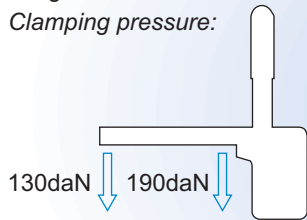
**Finishing:** Chemi-Blackened

**Supplied with:** 12x100mm spindles

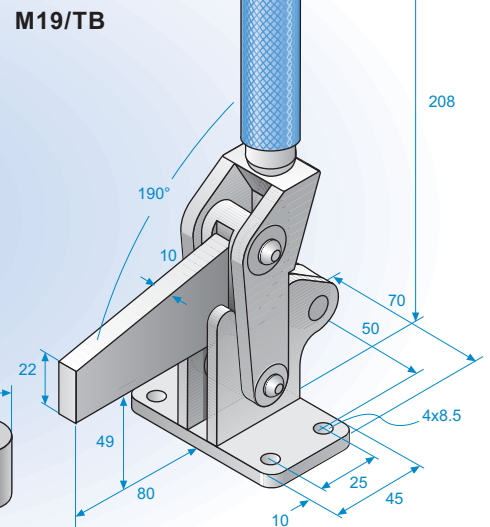
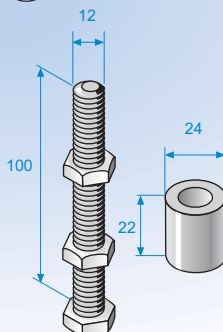
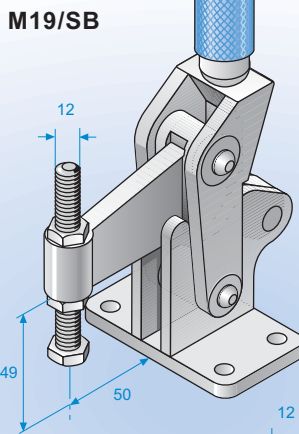
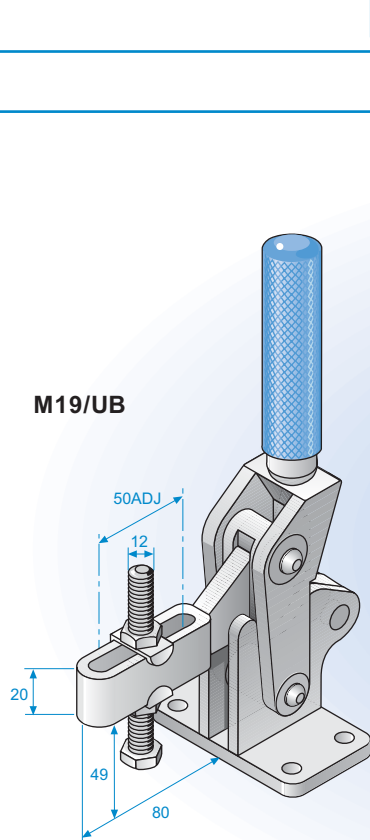
**Max Holding pressure:** 800daN close to body

**Weight:** 1.5Kgs

**Clamping pressure:**



M19/TB



Refer to accessory pages for further information