



Pneumatic Gripper, Locking, 32 Bore, Single Clamp Arm, Intergrated sensing.

Max air pressure 8 Bar
Normal working 5 bar
Restrictors must be used in conjunction with cylinder

Clamping Force 850N (5 Bar)
Weight 1.4 Kg

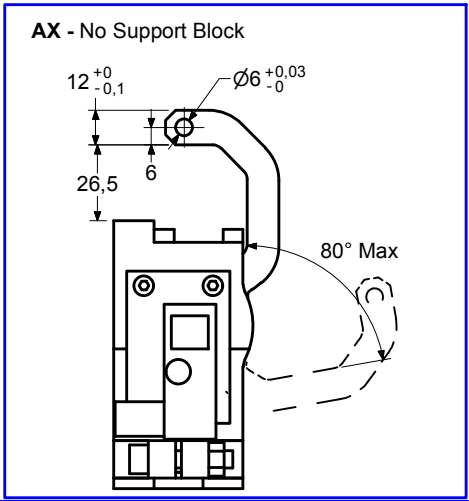
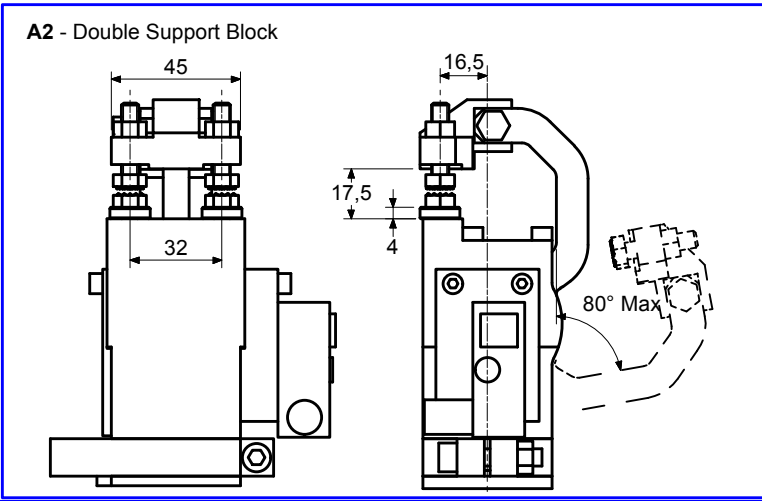
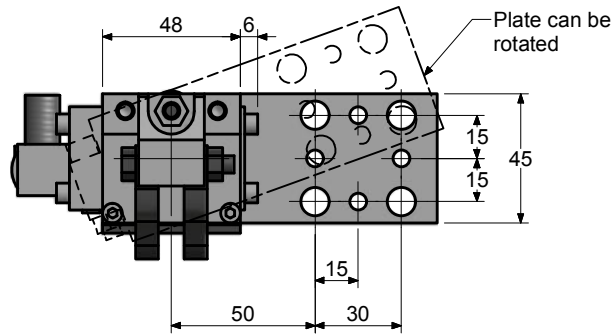
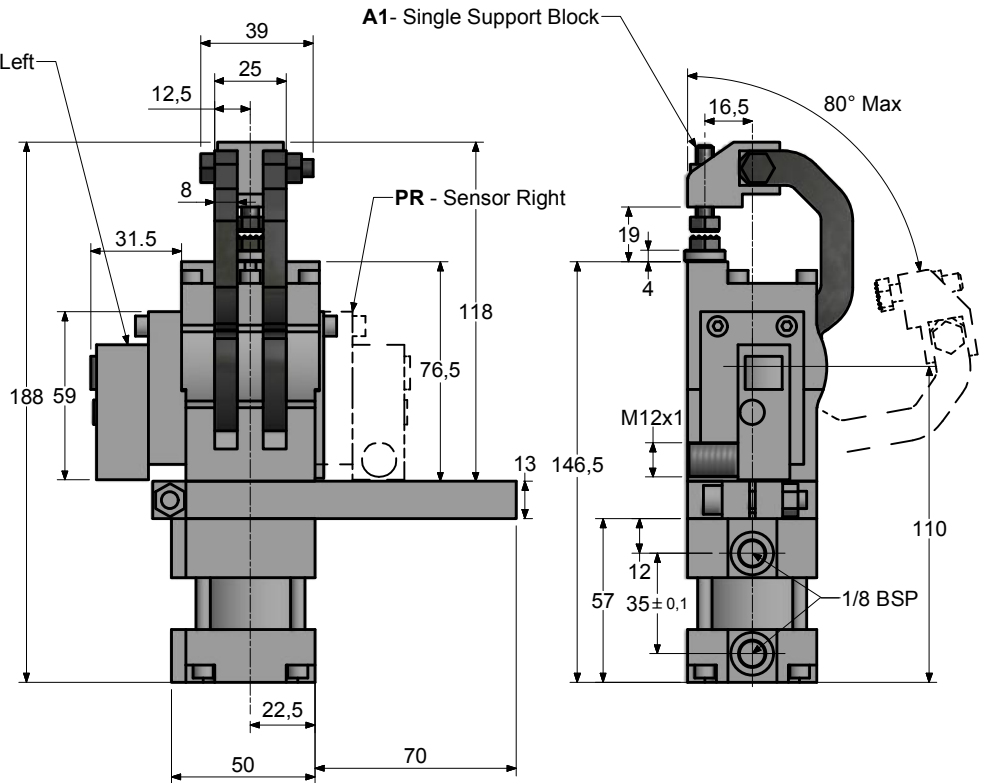
Support Block Options
AX No Support block
A1 Single Support Block(1 pin)
A2 Double Support Block(2 pins)

Sensing Options
PX No sensing
PL Inductive switch left side
PR Inductive switch right side

Mounting Plate Options
See data sheets for details

Opening Angles
22.5, 45, 80 Degrees Max

See order guide for more information





Pneumatic Gripper, Locking, 32 Bore, Double Clamp Arm, Intergrated sensing

Max air pressure 8 Bar
Normal working 5 bar
Restrictors must be used in conjunction with cylinder

Clamping Force 250N (5 Bar)
Weight 1.3 Kg

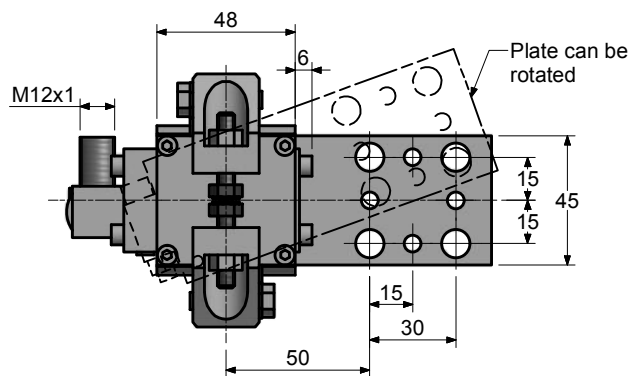
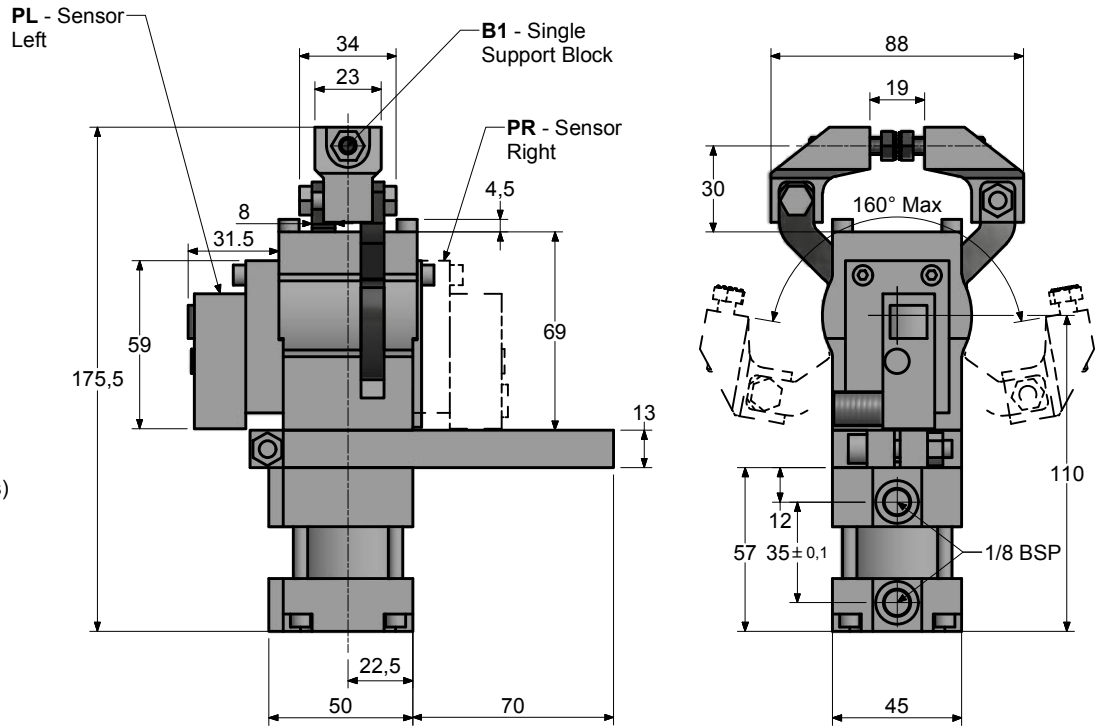
Support Block Options
BX No Support block
B1 Single Support Block(1 pin)
B2 Double Support Block(2 pins)

Sensing Options
PX No sensing
PL Inductive switch left side
PR Inductive switch right side

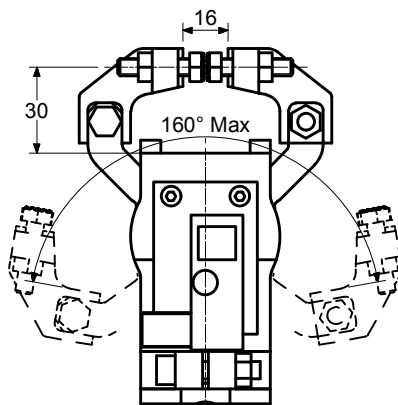
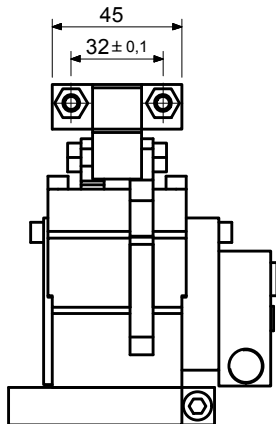
Mounting Plate Options
See data sheets for details

Opening Angles
45, 90, 160 Degrees Max

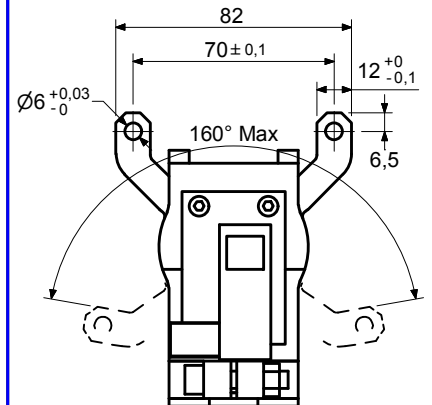
See order guide for more information°



B2 - Double Support Block

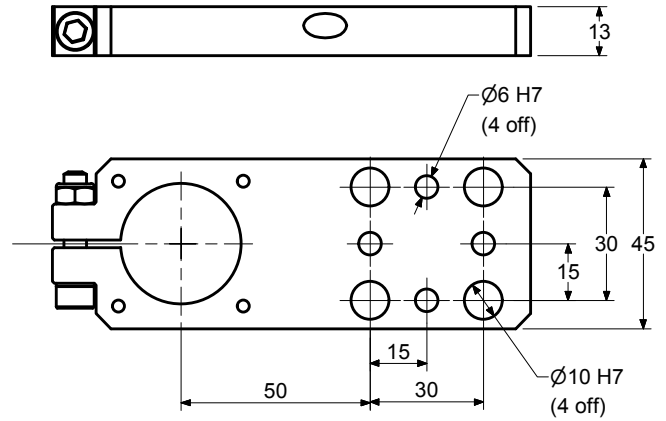
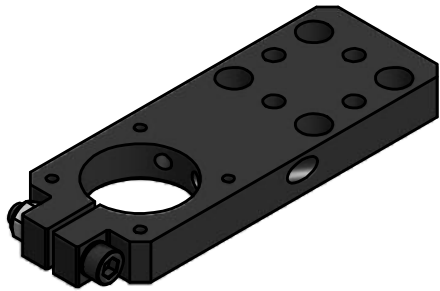


BX - No Support Block



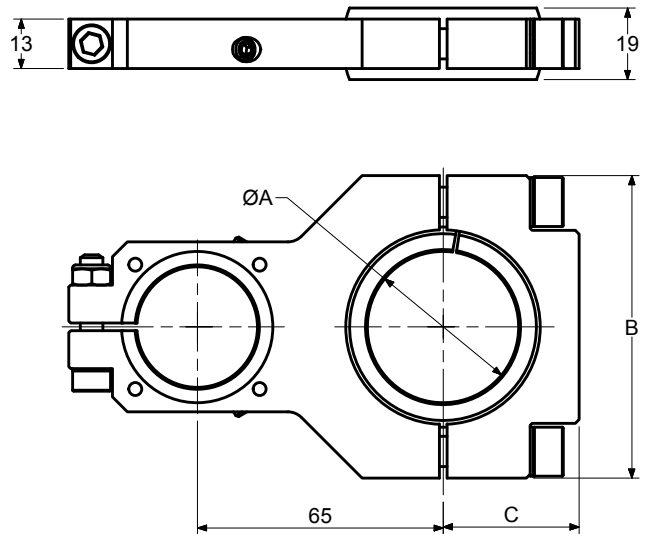
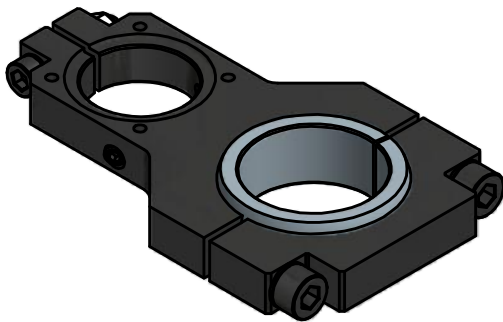


Mounting Plate Type A

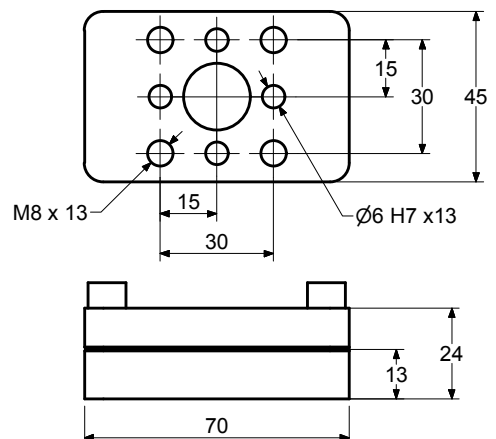
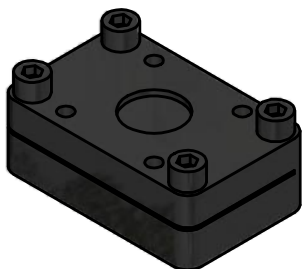


Mounting Plate Type B

Part No	Dia A	B	C
B30	30	70	25.5
B40	40	80	36



Mounting Plate Type C



Tolerances: Screw holes ± 0.1 , Dowel Holes ± 0.02

Order code guide for GK32 Gripper clamp products

example showing the break down of the order code:

