

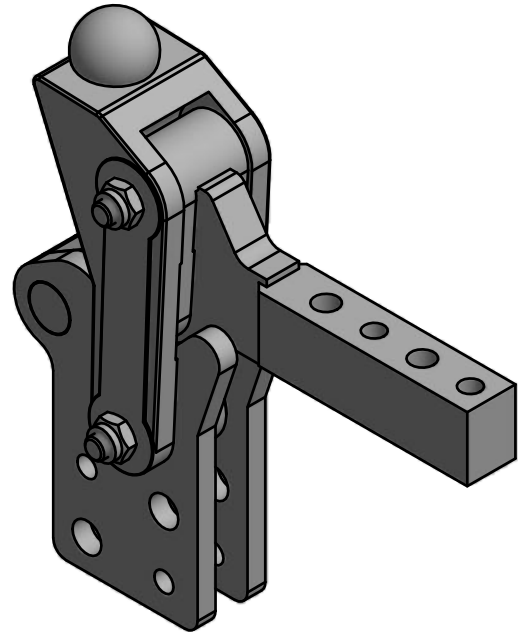
# HAND CLAMP

M19-01-70



**M19 heavy duty clamp, supplied with predrilled arm and base.**

*Material:* Heavy guage steel  
 Hardened pins and bushes  
*Finishing:* Chemi-Blackened  
*Holding Pressure:* 800daN close to body  
*Weight:* 1.15Kg  
*Clamping Pressure:* 190daN close to body  
 To Order: **M19-01-70**



See accessories for handles and grips

