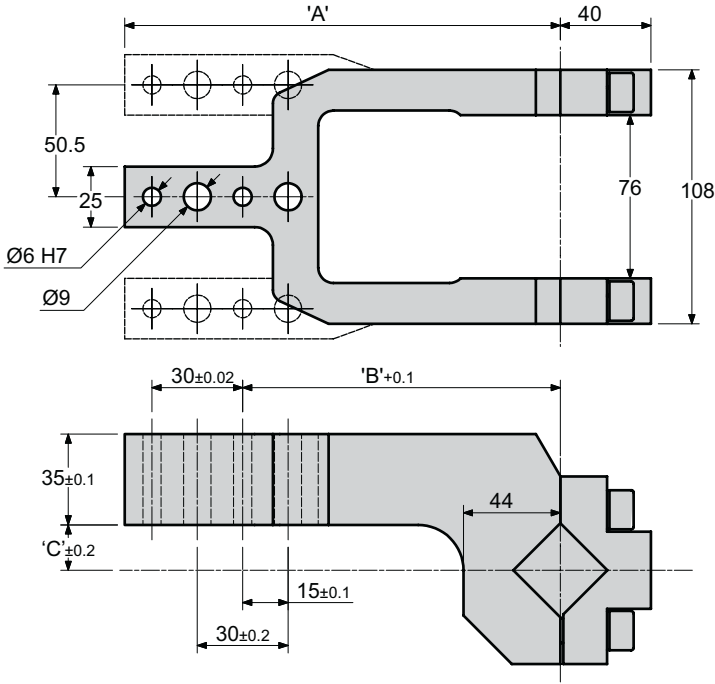
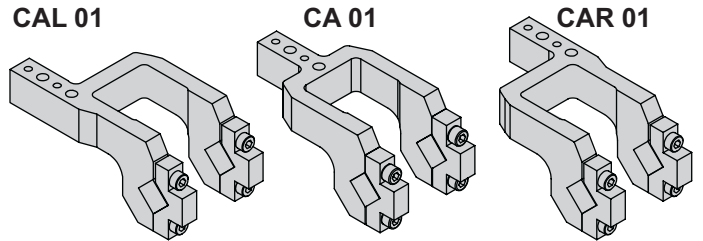
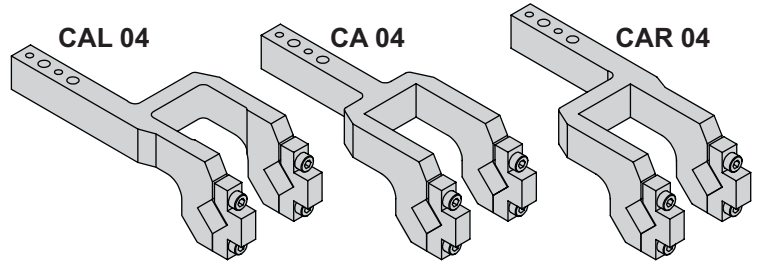


DOUBLE ARMS

X••80



ARM TYPE	'A'	'B'	'C'	WT kg	MAX OPENING
TYPE 01	180	140	20	3.0	135
TYPE 04	240	200	20	3.3	135

TO ORDER :

See order guide for further information

X••180 - D - ES1 - **CAR** - **01** - 090

Arm Type
CA Centre Arm
CAR Right Arm
CAL Left Arm

Offset/Length
01 Arm type 1 (20/180)
02 Arm type 2 (20/180)
03 Arm type 3 (20/180)
04 Arm type 4 (20/240)

