



Power clamp, slim line body, total protection, intergrated sensing, front & side mounting, 25mm double square.

Maximum air pressure
8 BAR
Normal working 5 BAR
Dry air is permissible
Restricters must be used in conjunction with cylinder
Torque 590 Nm at 5BAR
Weight 22.5kg

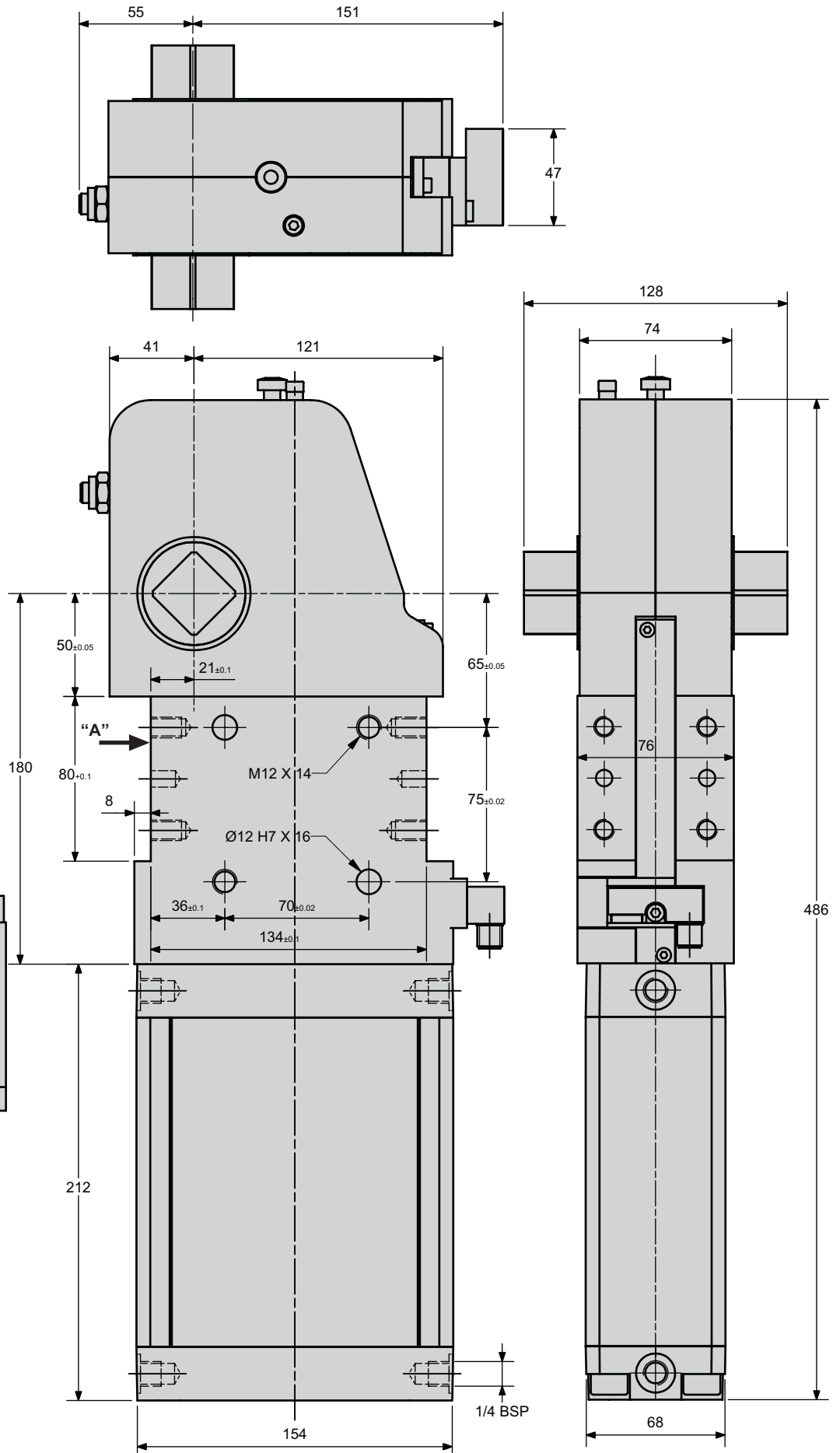
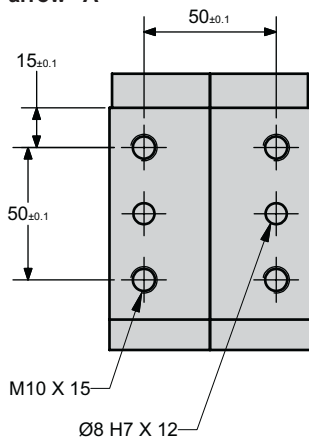
Arm options
See data sheet for details.

Sensing options
NS No Sensing
ES1 Inductive Switches

Opening Angles
45°, 90°, 120°, 135°

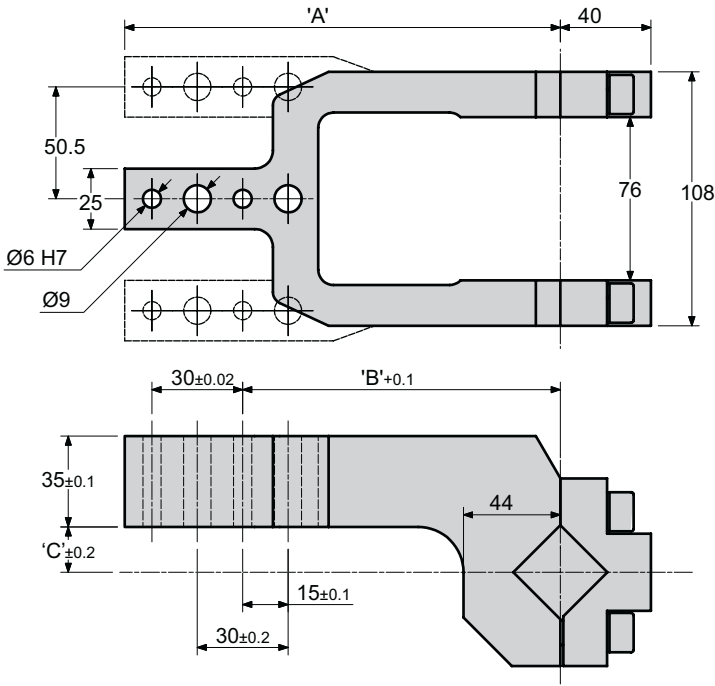
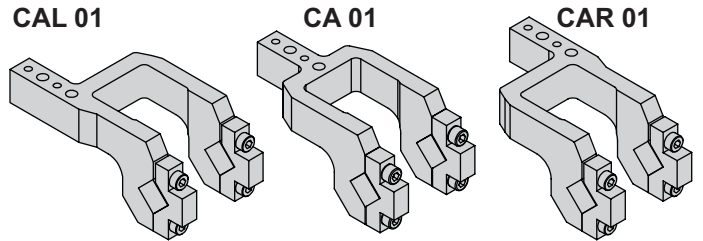
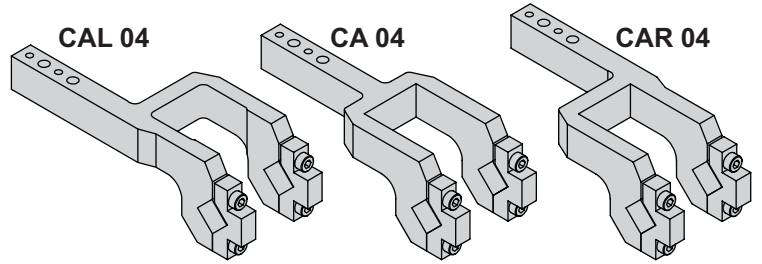
See order guide for further information

View arrow "A"



DOUBLE ARMS

X••80



ARM TYPE	'A'	'B'	'C'	WT	MAX OPENING
TYPE 01	180	140	20	3.0	135
TYPE 04	240	200	20	3.3	135

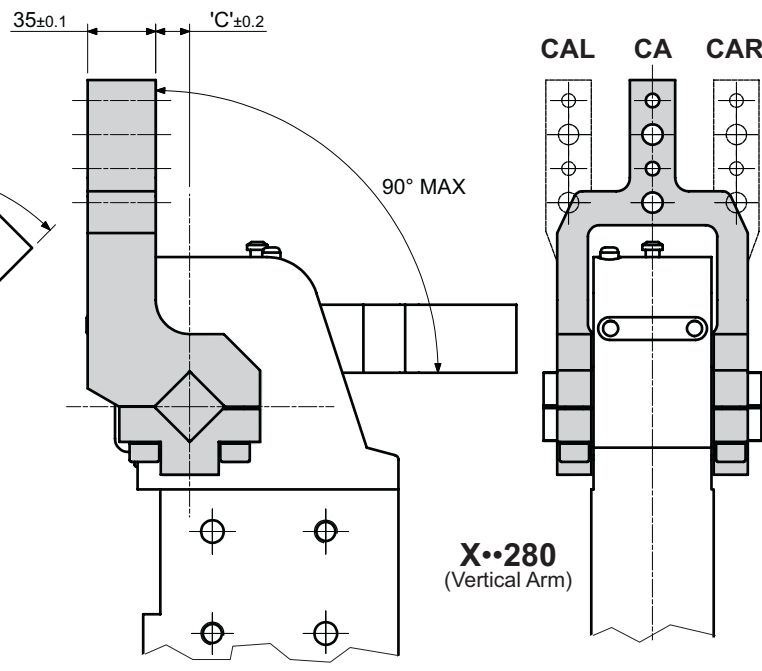
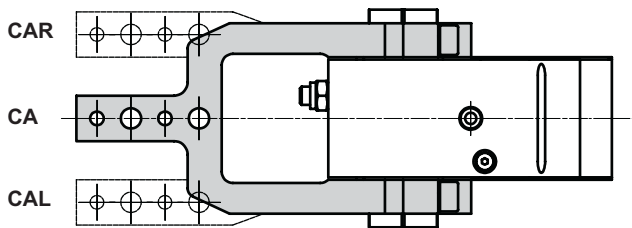
TO ORDER :

See order guide for further information

X••180 - D - ES1 - **CAR** - **01** - 090

Arm Type
CA Centre Arm
CAR Right Arm
CAL Left Arm

Offset/Length
01 Arm type 1 (20/180)
02 Arm type 2 (20/180)
03 Arm type 3 (20/180)
04 Arm type 4 (20/240)



X••180
(Horizontal Arm)

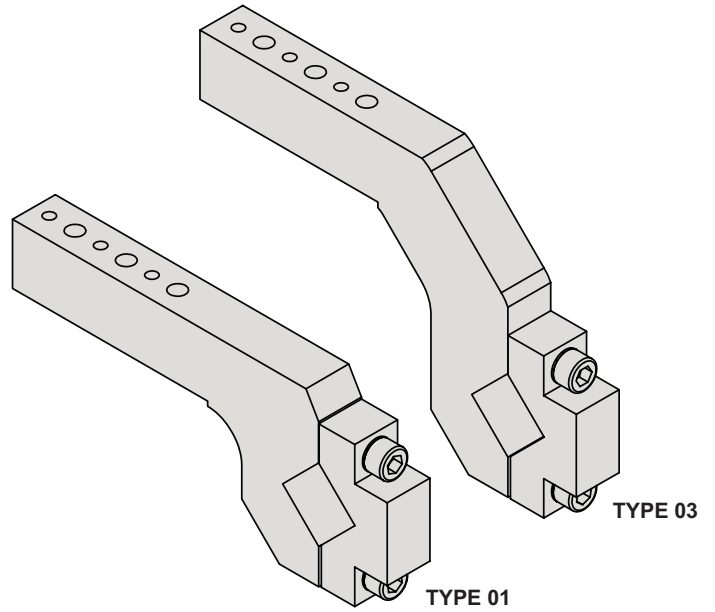
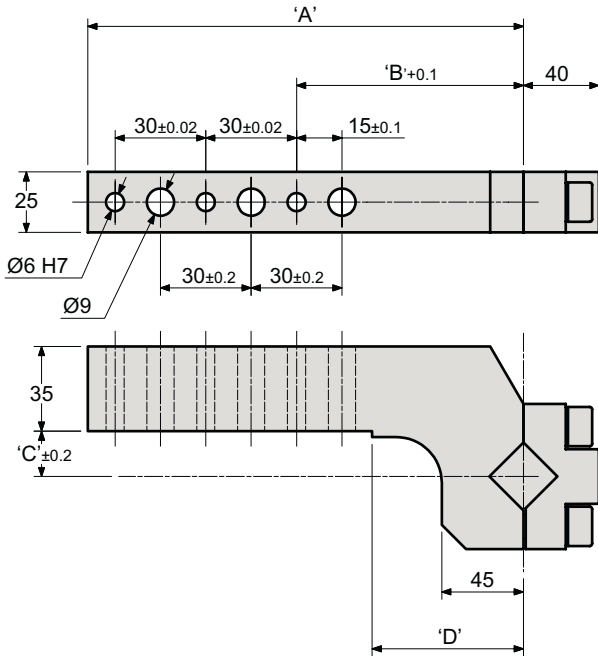
X••280
(Vertical Arm)

SINGLE ARMS

X••80



X••80 Clamp Arm Options



CLAMP ARM	'A'	'B'	'C'	'D'	$\frac{\Omega}{kg}$ WT
TYPE 01	180	110	20	65	2.0
TYPE 03	180	110	70	76	2.3

TO ORDER :

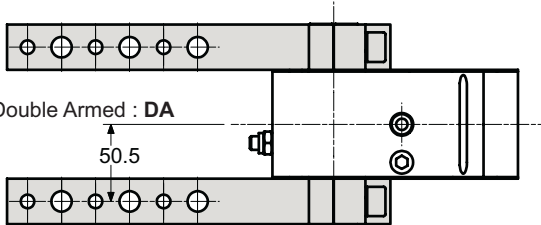
See order guide for further information

X••180-D-ES1- RA - 01 - 090

Arm Type
 RA Right hand arm
 LA Left hand arm
 DA Double arm

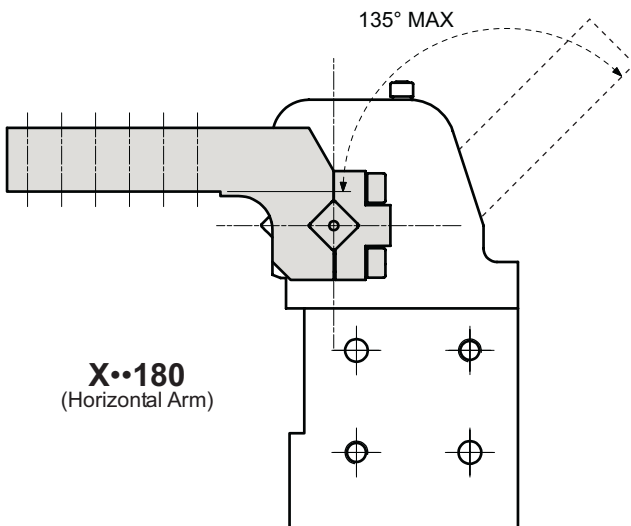
Arm options
 01 Arm type 1
 03 Arm type 3

Right Hand Arm RA

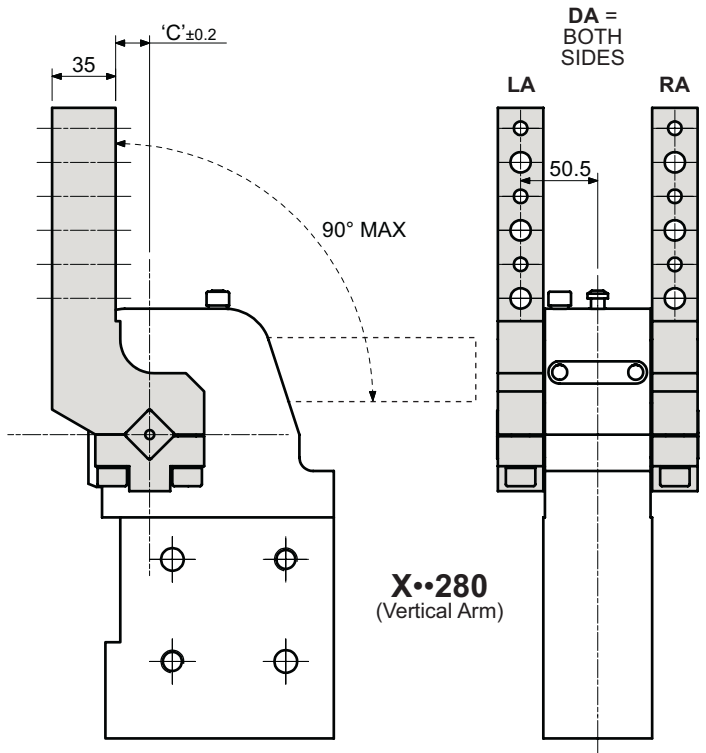


Double Armed : DA

Left Hand Arm LA



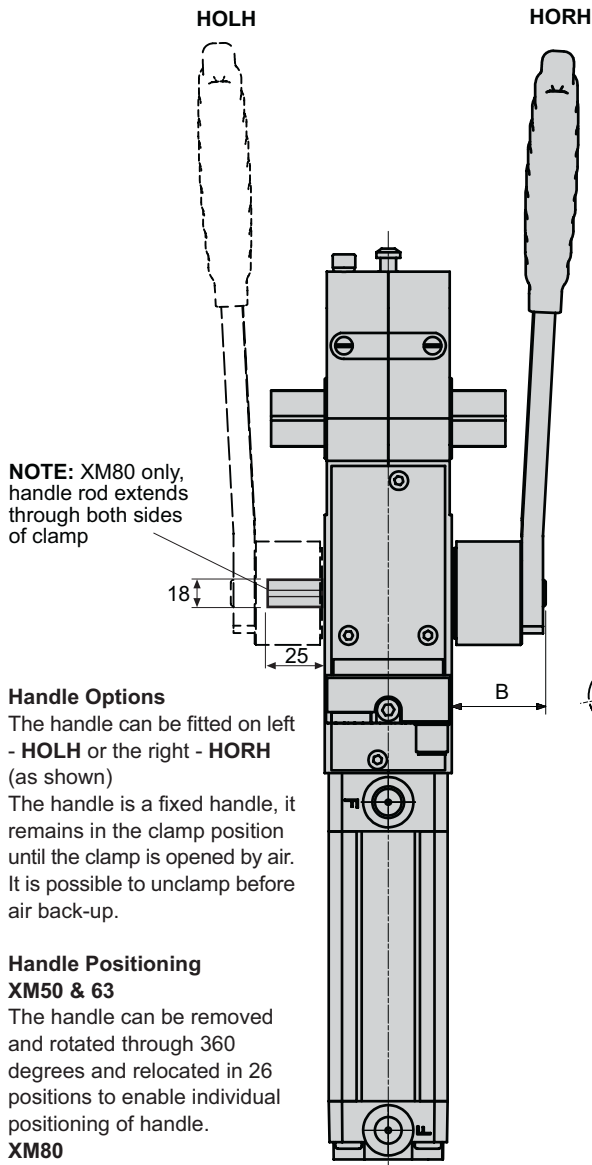
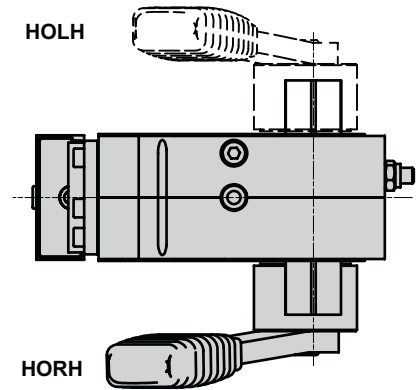
X••180
(Horizontal Arm)



X••280
(Vertical Arm)



Power clamp, hand applied, slim line body, total protection, intergrated sensing, front & side mounting, 20mm double square.



Handle Options

The handle can be fitted on left - HOLH or the right - HORH (as shown)

The handle is a fixed handle, it remains in the clamp position until the clamp is opened by air. It is possible to unclamp before air back-up.

Handle Positioning

XM50 & 63

The handle can be removed and rotated through 360 degrees and relocated in 26 positions to enable individual positioning of handle.

XM80

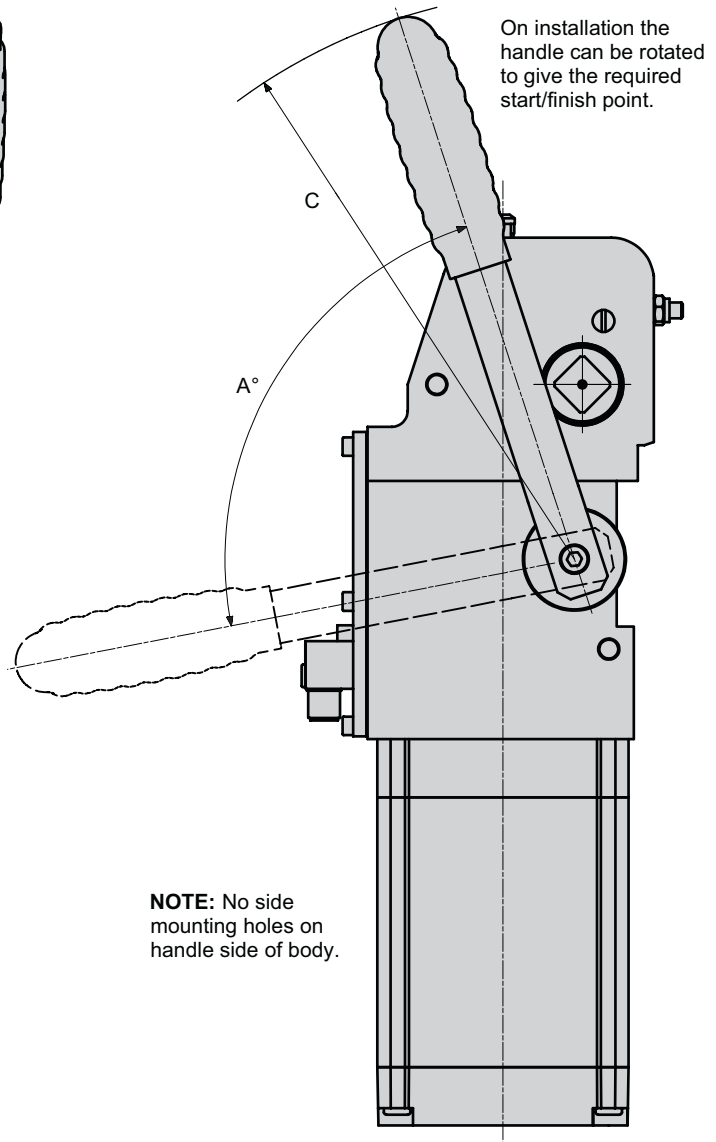
The handle is supplied loose to enable individual positioning of handle, weld on assembly.

Opening Angles

max 120°

See order guide for further information

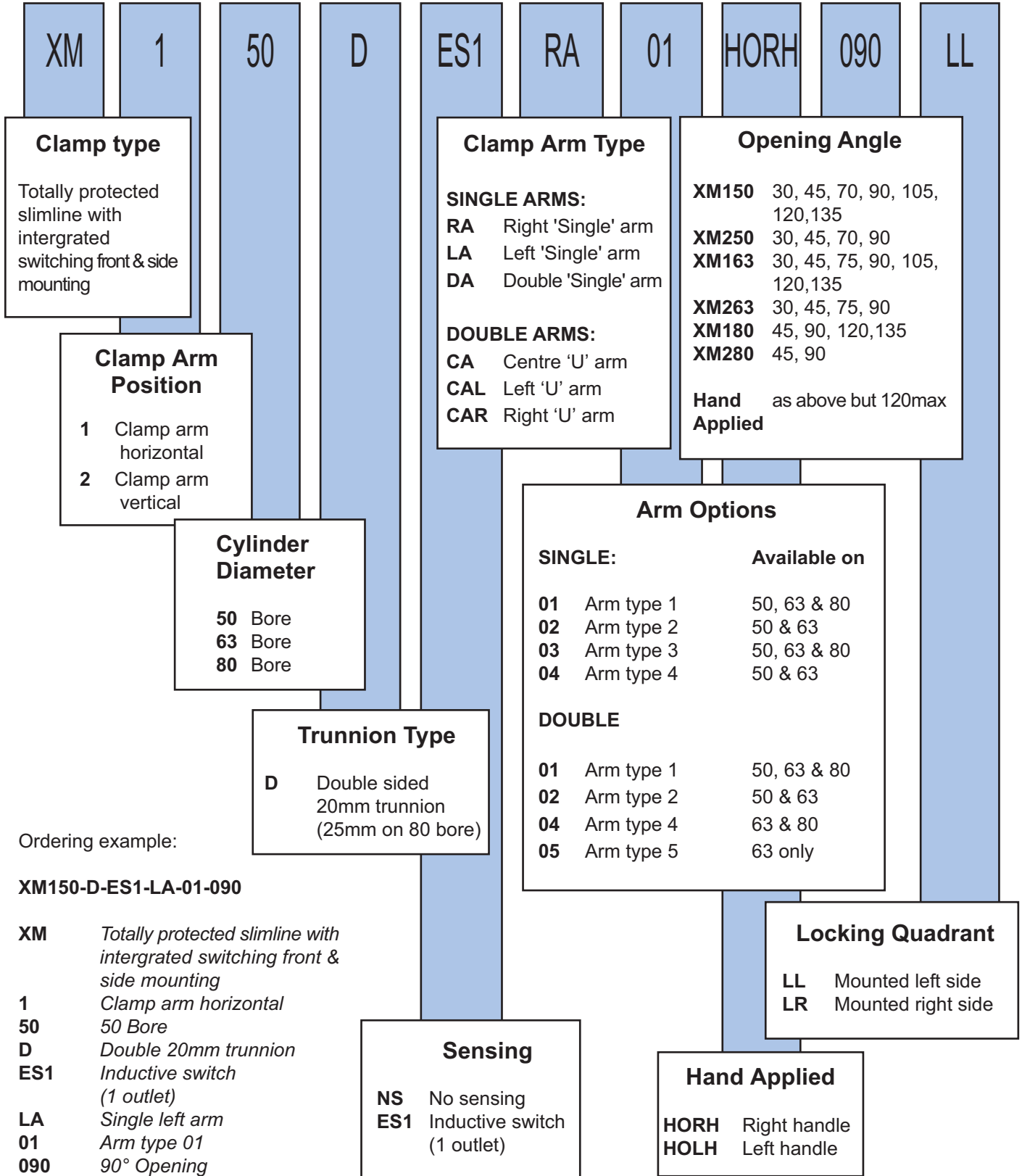
5/3 Valve required for central positioning



	A	B	C
XM50-D	83°	36	215
XM63-D	97°	36	235
XM80-D	94°	49	250

Order code guide for XM power Clamp products

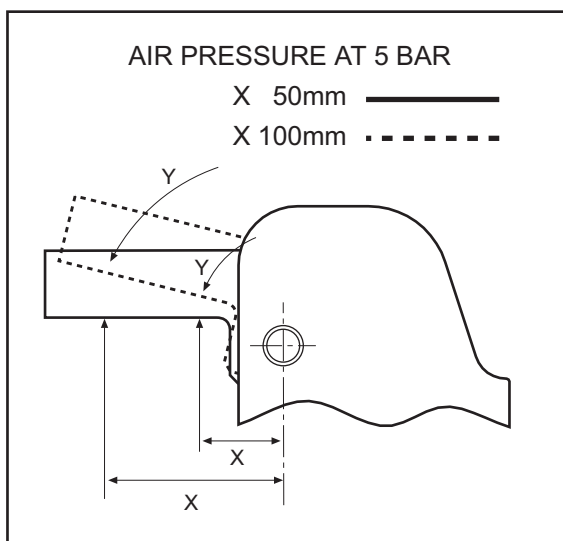
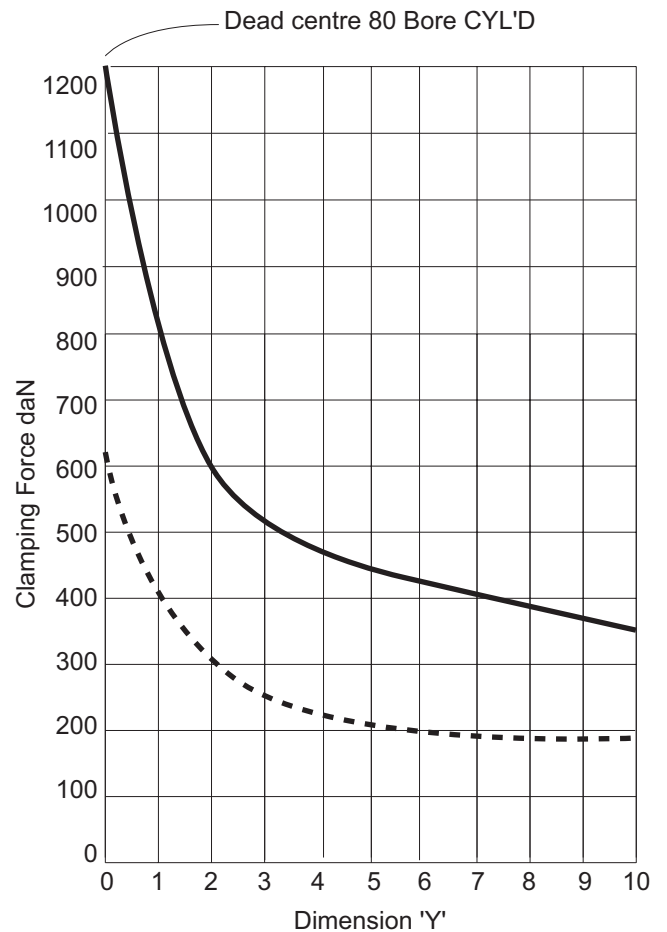
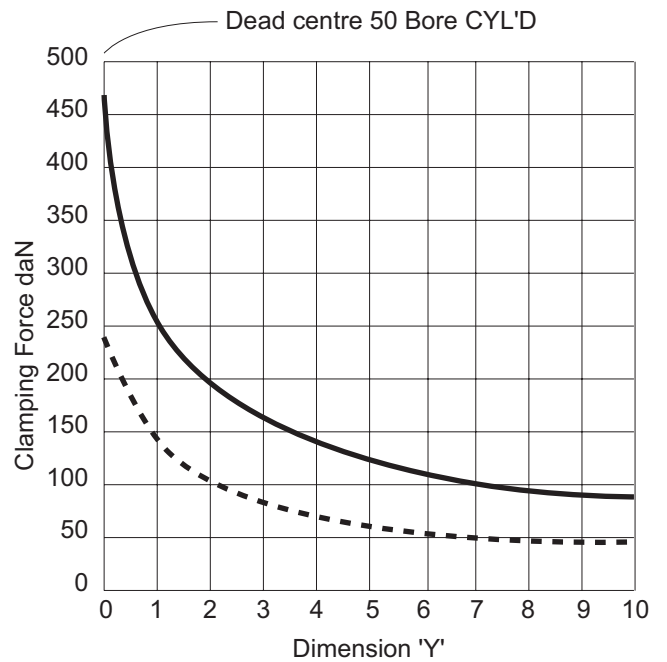
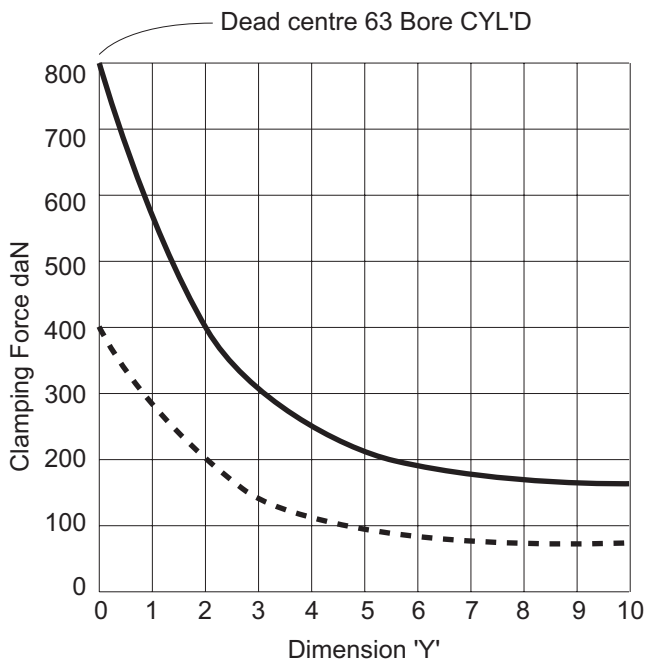
example showing the break down of the order code:



CLAMPING FORCES

Clamping forces for XM, XSM & XUSTP range

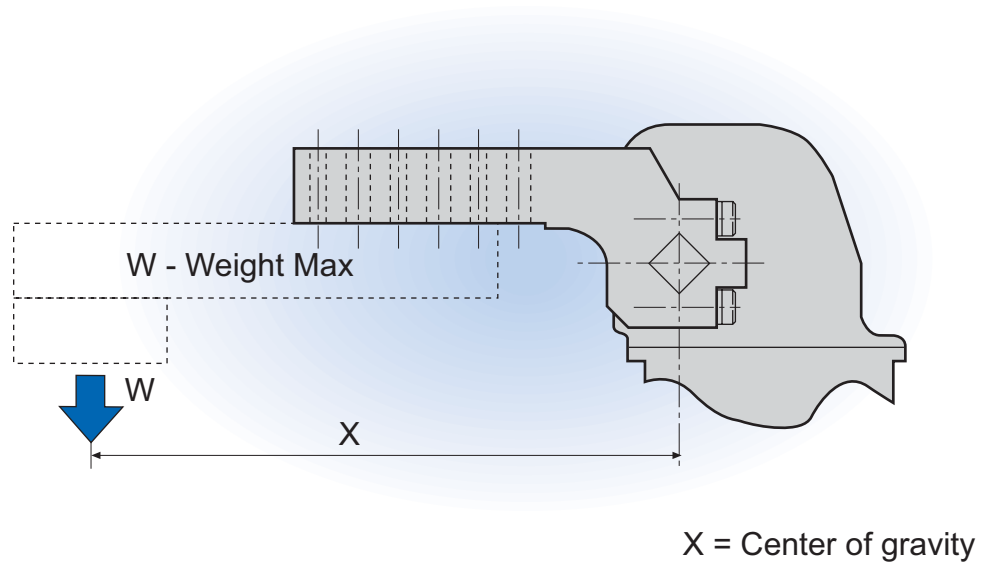
Clamping forces generated at closing distances of clamp arm (dimension Y)



POWER CLAMP

Maximum Weight for Clamp Arms

Clamp arm weights for XM, XSM & XUSTP range



Clamp Model	Distance X											
	75mm	100mm	125mm	150mm	175mm	200mm	225mm	250mm	275mm	300mm	350mm	
50	3.85	2.95	2.4	2.05	1.8	1.45	1.15	1.1	NA	NA	NA	
63	5.0	4.05	3.15	2.85	2.35	2.0	1.65	1.5	1.4	1.2	NA	
80	8.5	6.20	5.0	4.1	3.7	3.2	2.4	2.2	2.0	1.9	1.65	

Weights given in Kilograms

Weights given in this table not to be exceeded