



Power clamp compact body total protection intergrated sensing side mounting central arm

Maximum air pressure 8 BAR
 Normal working 5 BAR
 Dry air is permissible
 Restricters must be used in conjunction with cylinder

Torque 30Nm at 5BAR
 Weight 1.4kg

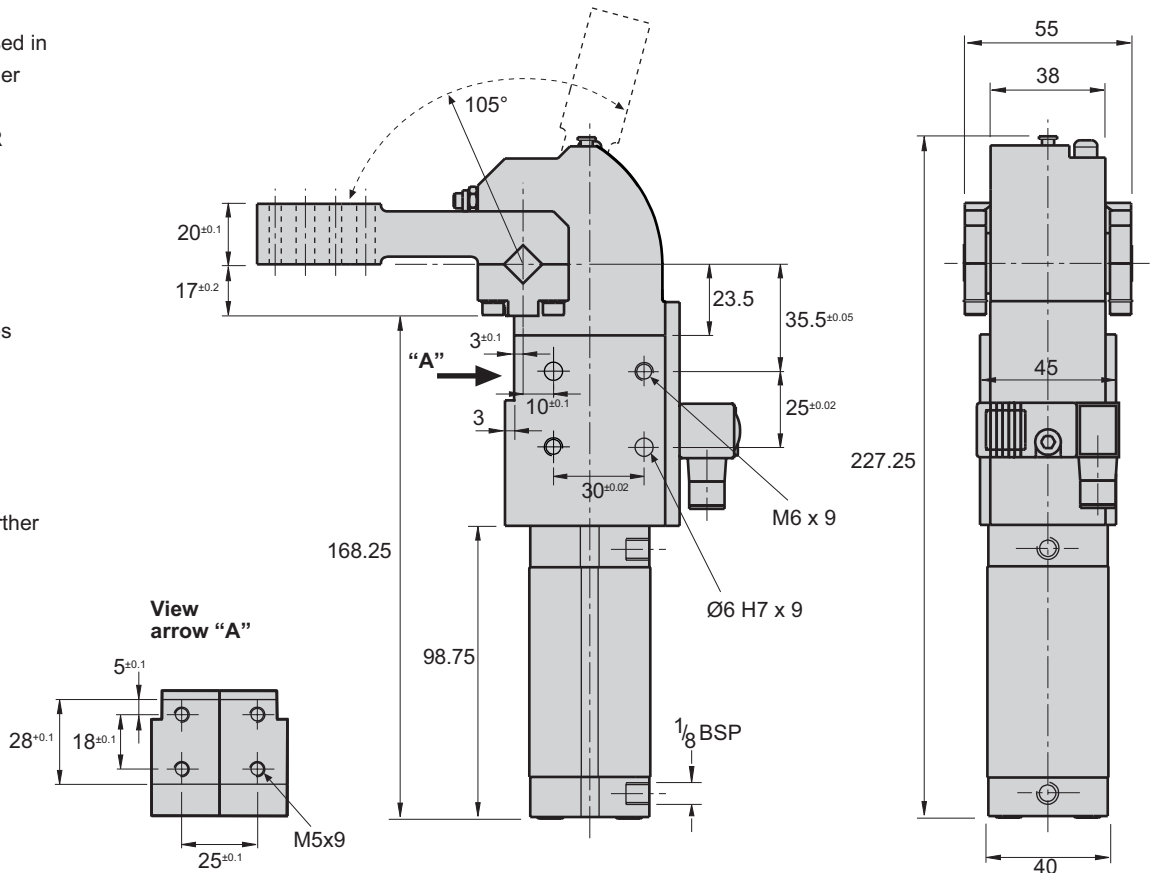
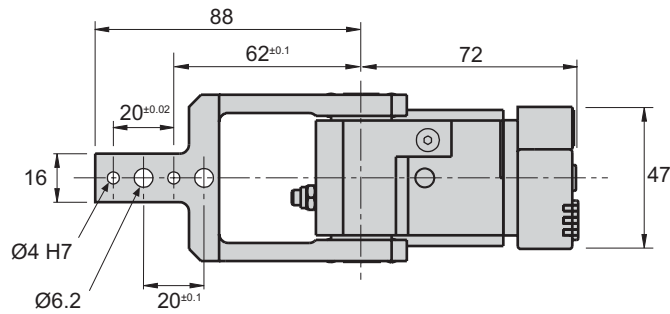
Sensing options

NS No Sensing
 MC Magnetic Cylinder (for magnetic switch)
 ES1 Inductive Switches (1 outlet)

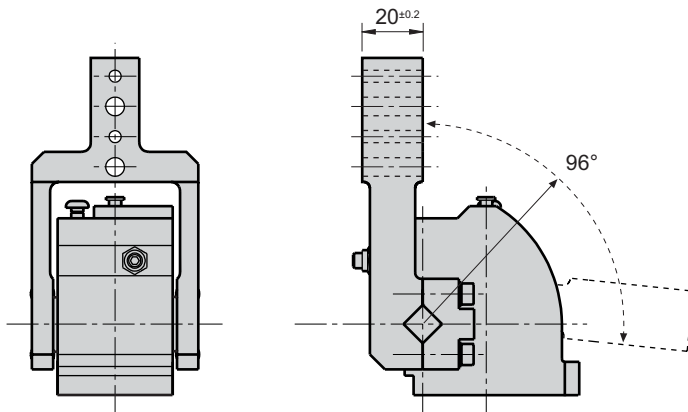
Opening Angles

30°, 45°, 60°, 75°, 90°, 96° & 105°

See order guide for further information



XSM225





Power clamp, hand applied, compact body, total protection, intergrated sensing, side mounting.

Maximum air pressure 8 BAR
 Normal working 5 BAR
 Dry air is permissible
 Restricters must be used in conjunction with cylinder

Weight:

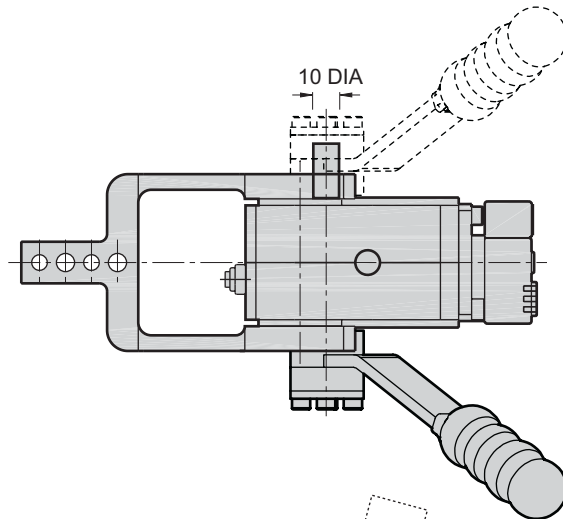
XSM25 1.7kg
 XSM40 2.7kg

Handle Options

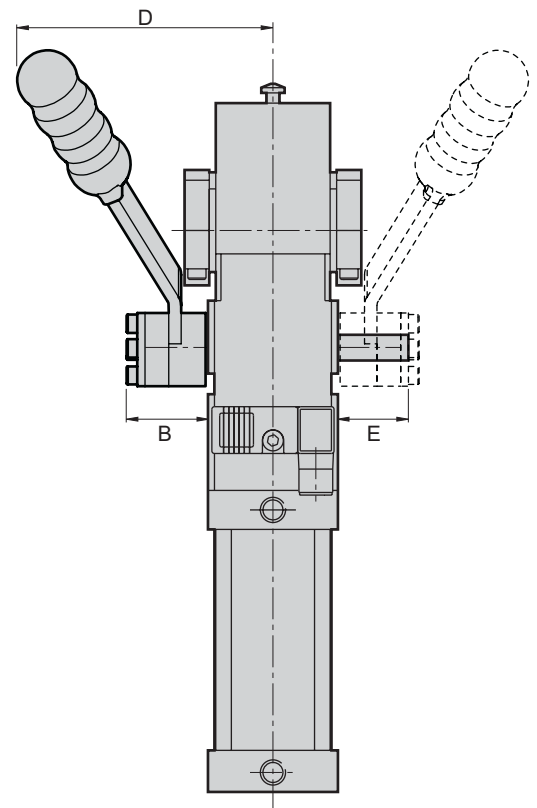
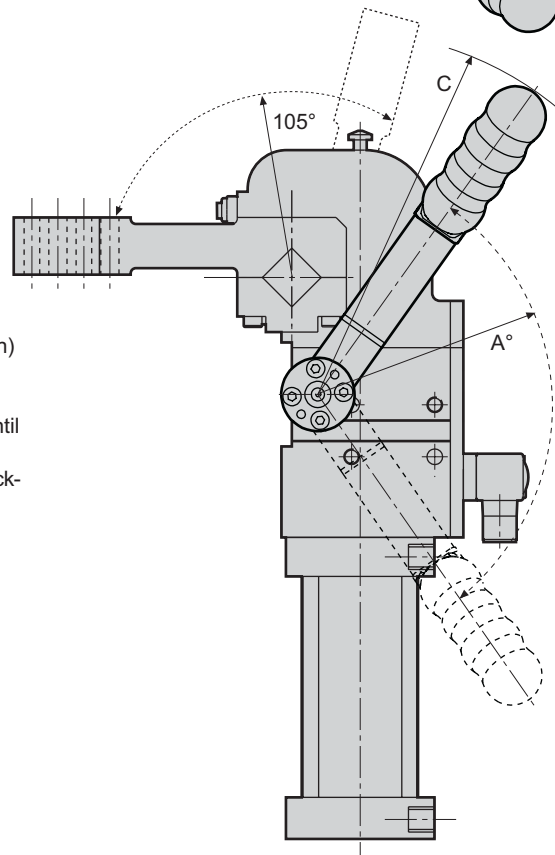
The handle is supplied loose and can be fitted on both sides of the clamp left (as shown) or the right.
 The handle is a fixed handle, it remains in the clamp position until the clamp is opened by air. It is possible to unclamp before air back-up.

5/3 Valve required for central positioning

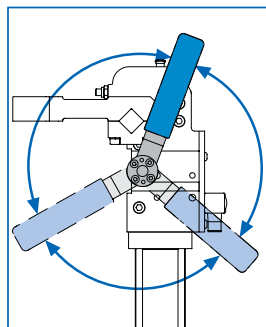
See order guide for further information



Note: The handle is supplied loose and can be fitted on both sides of the clamp



	A	B	C	D	E
XSM25 HO	115°	31	132	90	26
XSM40 HO	113°	31	142	98	27



The handle can be adjusted through 360° to suit the desired operating position



Locking Quadrant Power clamp, slim line body, total protection, intergrated sensing, side mounting.

Locking Quadrant

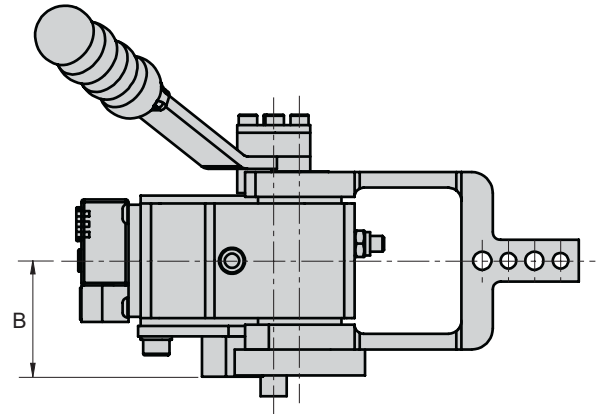
Retains clamp arm in open position without air supply. If the air supply is removed from the clamp when in the open position, for any reason: safety, circuit design, hand applied applications, supply failure, the clamp arm will not fall closed.

Typical application: Hand applied clamps with opening angles of less than 90 degrees (or when mounted at an angle) When the pneumatic valve moves into the neutral position to allow hand application.

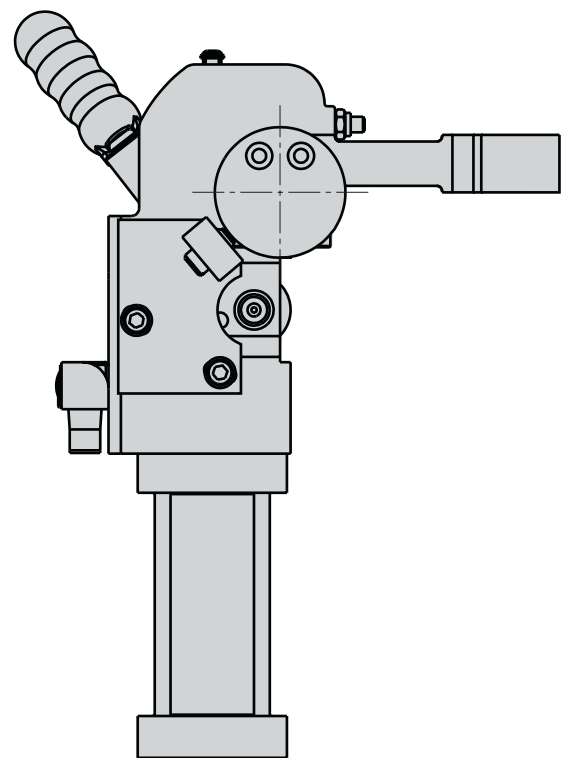
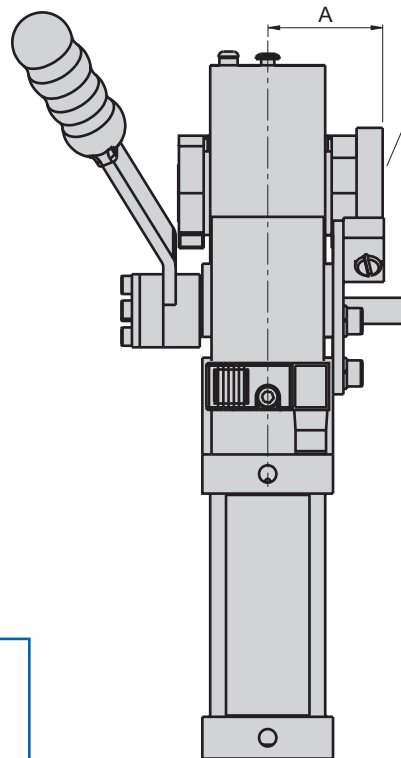
Options:

1. 25 & 40 bore clamps
2. Standard & hand applied clamps
3. Left Hand or Right Hand mounting

See order guide for further information

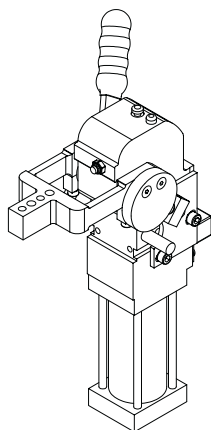


Right Hand Mounting shown (LR)



Note: Locking Quadrant is mounted on the opposite side to the handle

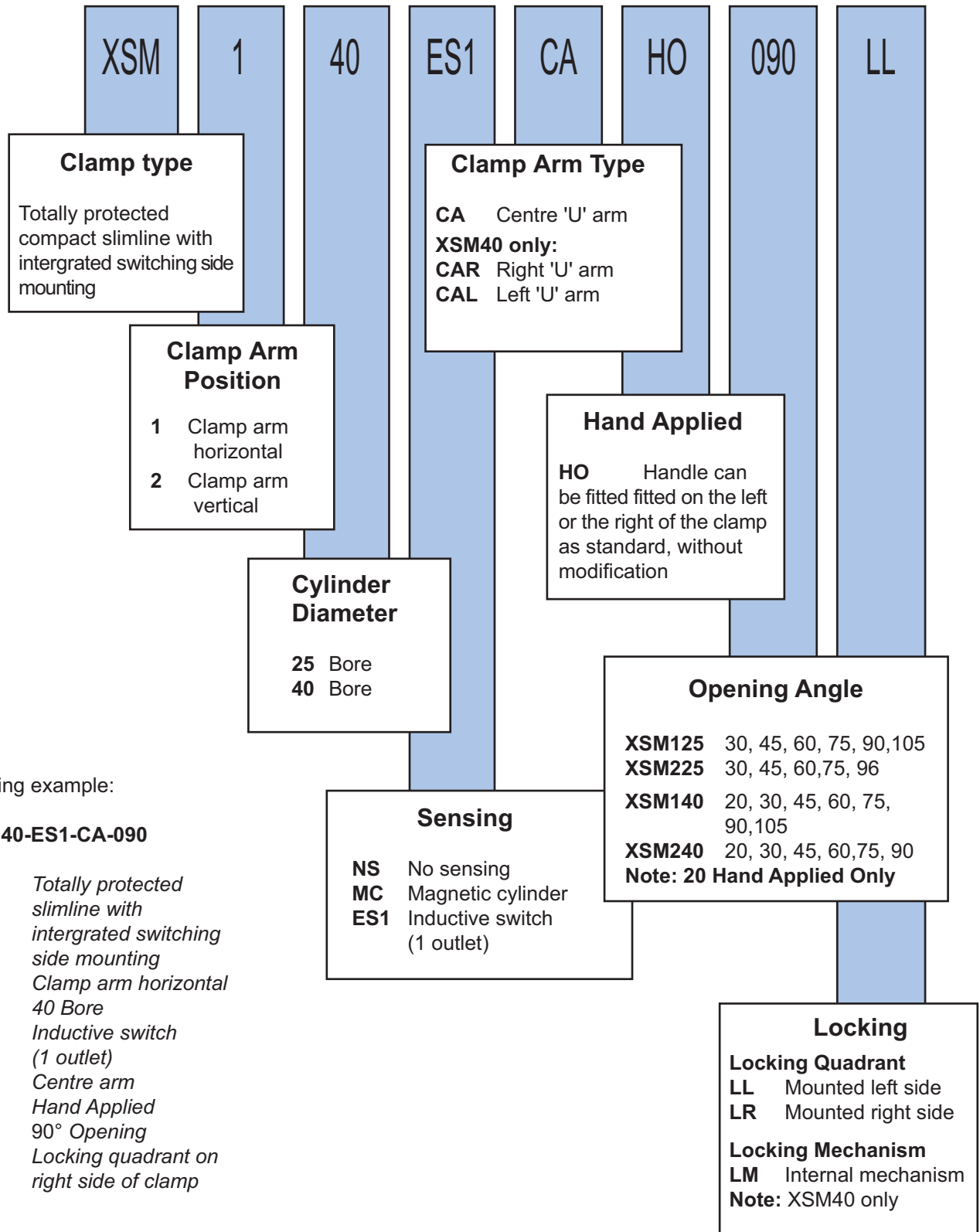
Left Hand Mounting (LL)



	A	B
XSM25 L	37.5	42
XSM40 L	44	44.5

Order code guide for XSM25 & 40 power clamp products

example showing the break down of the order code:



Ordering example:

XSM140-ES1-CA-090

XSM Totally protected slimline with intergrated switching side mounting
1 Clamp arm horizontal
40 40 Bore
ES1 Inductive switch (1 outlet)
CA Centre arm
HO Hand Applied
090 90° Opening
LR Locking quadrant on right side of clamp