

Hand Applied Power Locator, locking, dual shaft, 50 bore, 40 stroke, integrated sensing, side mounting.

Working air pressure 6 bar max
Dry air is permissible.
Restricters must be used in conjunction with cylinder

Locking:
Unit toggle locked in forward position

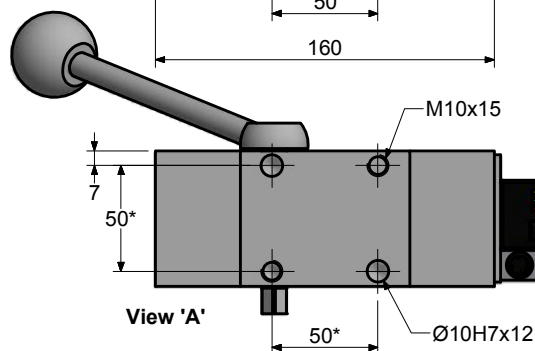
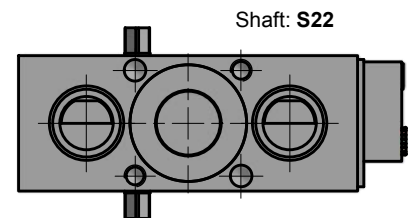
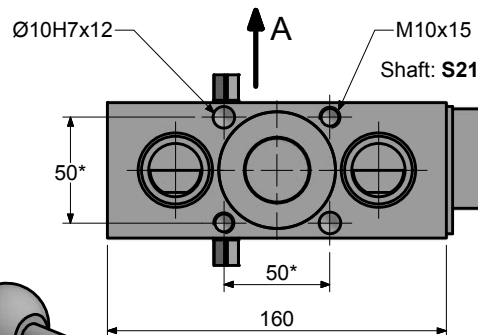
Handle Options:
The handle is supplied loose and can be fitted on both sides of the unit

Sensing Options
ES1 Electric Switches
ES3 Electric Switches (Rev)
NS No sensors

Shaft Positions
S21, S22

Stroke
40

Weight
7.2Kg



Shearing Force: min 700N at 6 bar, max. in end position approx 2000N
Tensile Force: min 640N at 6 bar, max. tear off force approx 2000N
Side Load Per Guide Rod: 400N
Max Deflexion: 0.1mm, at max. side load and 40 stroke
Max Off-set: 200mm from center
Max Manual force: 200N
Holding force per piston rod: 5kN
Tolerance * For dowel holes ±0.02
Tolerance * For screw holes ±0.2

To Order:
XLP50-2-3-ML-ES3-40-S21

