



**Hand applied Locator, 40 stroke, intergrated sensing, side mounting, anti-rotation.**

**Sensing options**

- NS No Sensing
- ES1 Inductive Switches

**PinType/Position:**

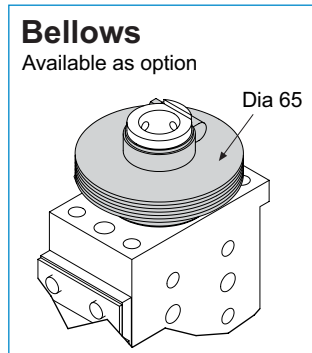
- Standard: S10
- Off-set pins: S21, S22, S23, S24

**Order Guide:**

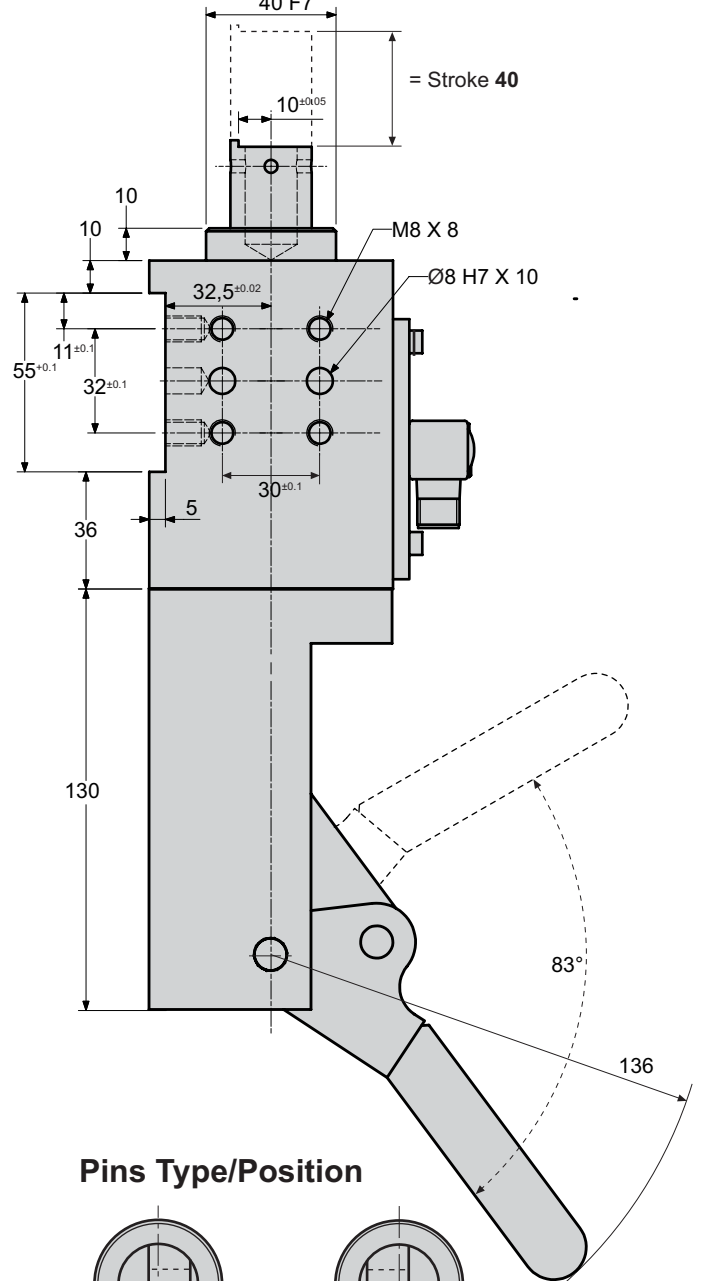
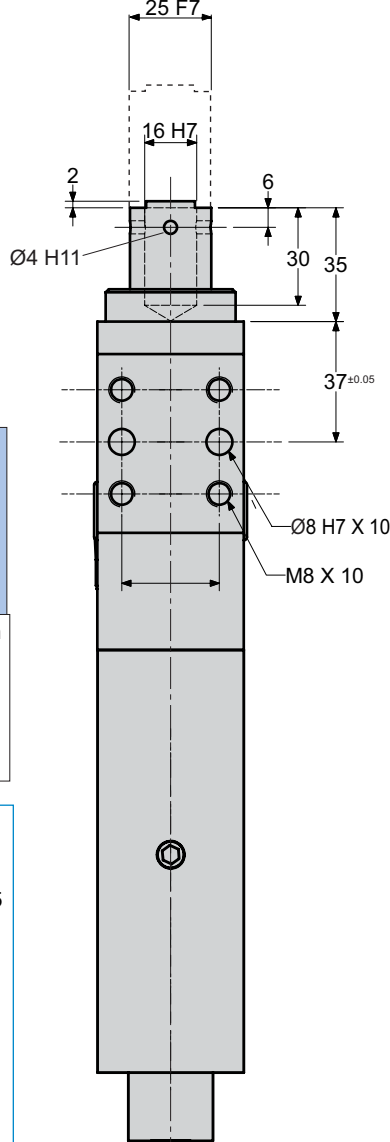
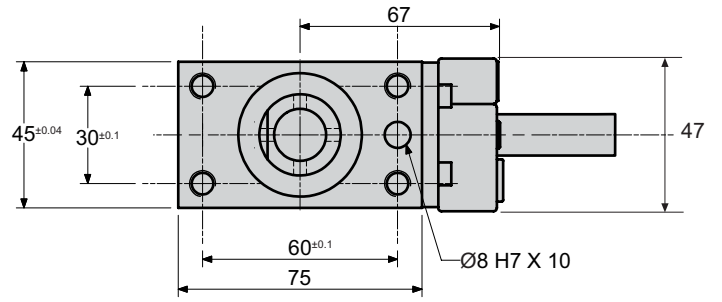
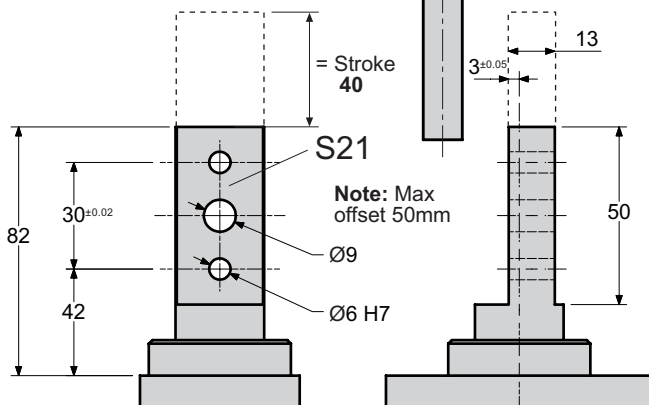
XLPR40 - HO - ES1 - 40 - S21

Sensing	
NS	No Sensing
ES1	Inductive 1 Connector

Pin Type/ Position	
Pin Type 1	S10
Pin Type 2	S21, S22, S23, S24



**Off-Set Pins**



**Pins Type/Position**

