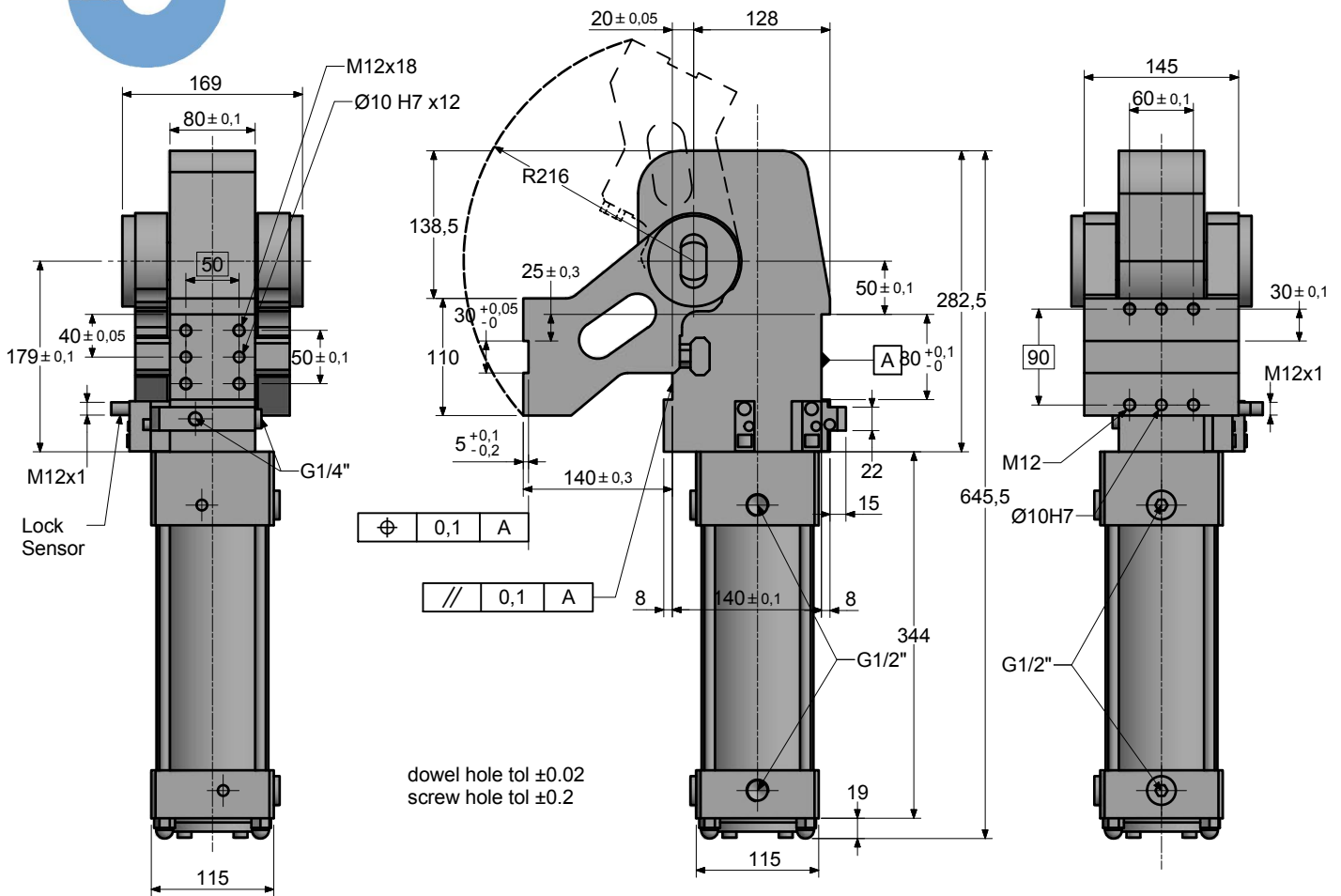


ROTATOR UNITS

XPUZ100.2



Rotator Unit, 100 bore, integrated sensing, integrated lock system, built in external stop, pneumatic/hydraulic motion control

Working air pressure 4-8 bar

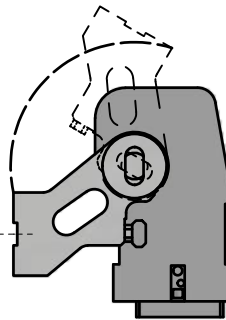
Holding Moment
2000Nm

Weight
30Kg

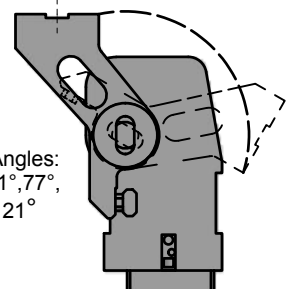
Opening Angles
29°,45°,61°,77°,92°,104°,121°
See arm orientation options

Max Torque By Load (5 bar)
Opening angle to 92° = 150Nm
Opening angle > 92° = 110Nm

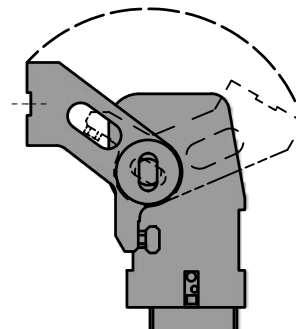
TYPE "1"
Opening Angles:
29°,45°,61°,77°,
92°,104°,121°



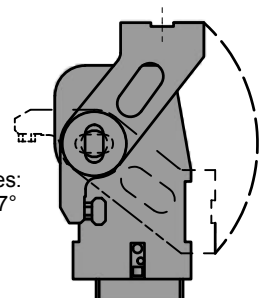
TYPE "2"
Opening Angles:
29°,45°,61°,77°,
92°,104°,121°



TYPE "3"
Opening Angles:
29°,45°,61°,77°,
92°,104°,121°

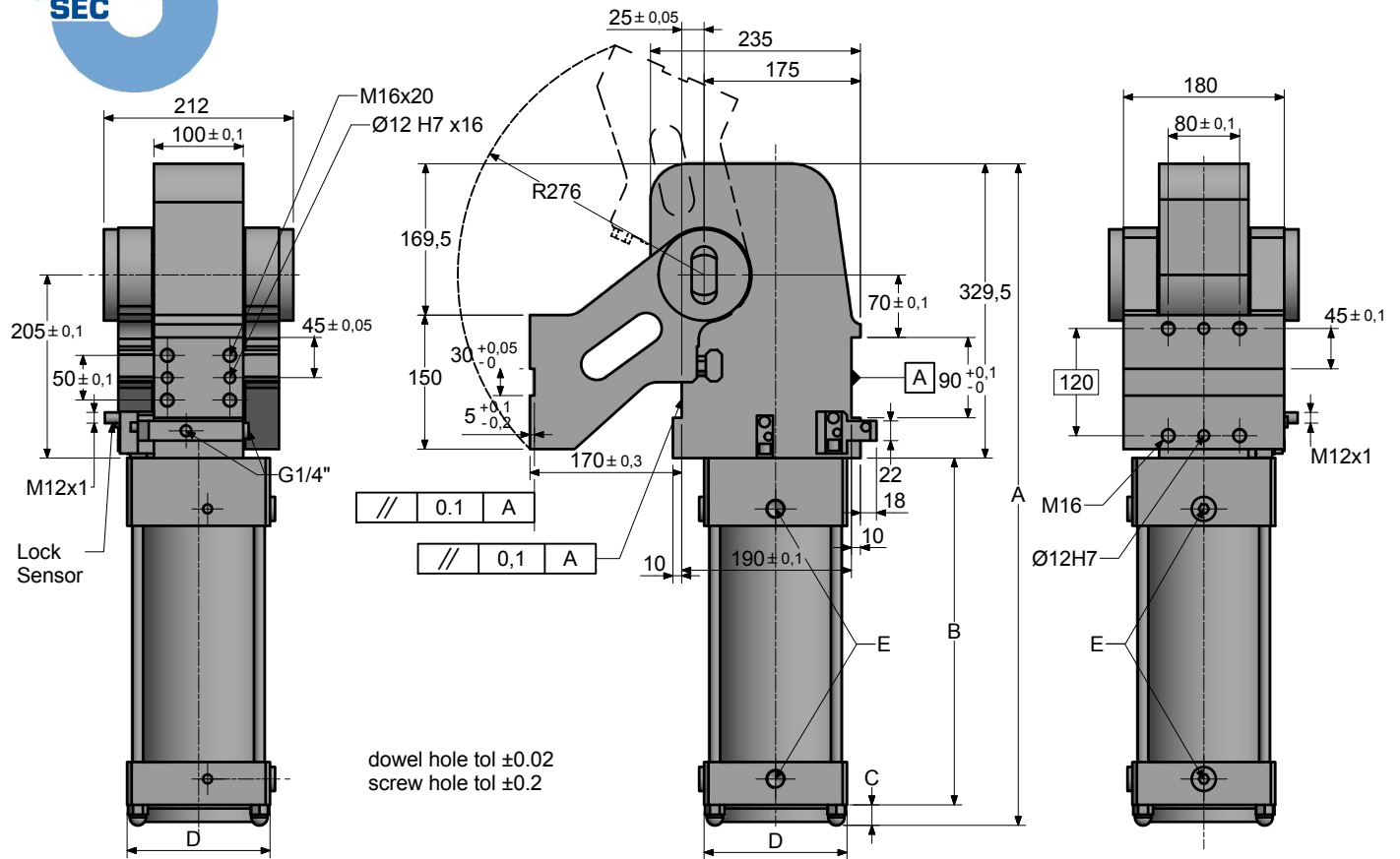


TYPE "4"
Opening Angles:
29°,45°,61°,77°



ROTATOR UNITS

XPUZ.2



Model	Cylinder Bore	Weight (Kg)	Holding Moment (Nm)	A	B	C	D	E	Max torque by load* (Nm) ≤92°	Max torque by load* (Nm) >92°/≤121°	Max torque by load* (Nm) >121°
XUPZ125.2	125	64	3500	741	388.5	23	160	G1/2"	240	180	65
XUPZ160.2	160	77	3500	750.5	398	23	180	G3/4"	410	300	100
XUPZ200.2	200	84	3500	754.5	406	19	220	G3/4"	660	480	175

Rotator Unit, integrated sensing, integrated lock system, built in external stop, pneumatic/hydraulic motion control

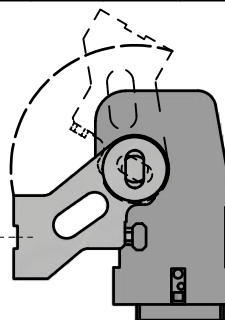
Working air pressure 4-8 bar

Opening Angles

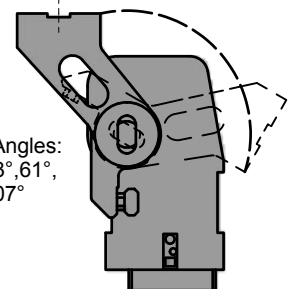
15°,30°,43°,61°,76°,91°,107°,129°

See arm orientation options

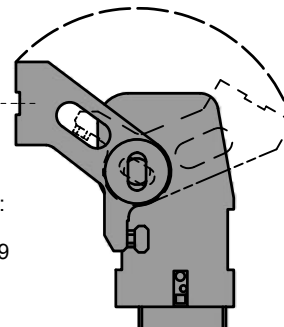
TYPE "1"
Opening Angles:
15°,30°,43°,61°,
76°,91°,107°,129°



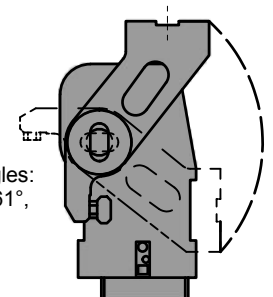
TYPE "2"
Opening Angles:
15°,30°,43°,61°,
76°,91°,107°



TYPE "3"
Opening Angles:
15°,30°,43°,61°,
76°,91°,107°,129°



TYPE "4"
Opening Angles:
15°,30°,43°,61°,
76°



Order code guide for XPUZ Series Dump Units

example showing the break down of the order code:

