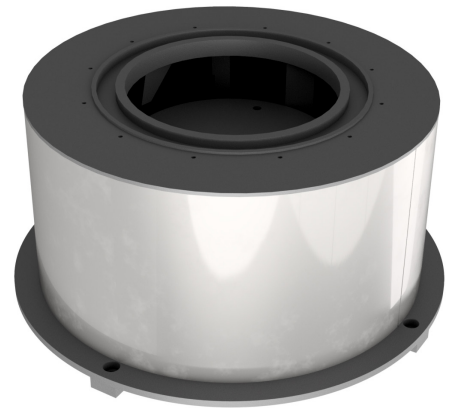
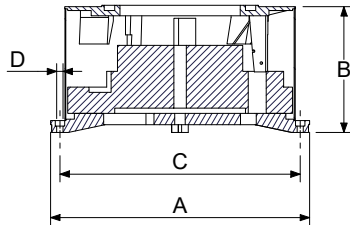


Z-Z ( 1:15 )



TYPE	BDU 250	BDU 400	BDU 630
Dimension A (mm)	340	496	720
Dimension B (mm)	222	241	224 52
Dimension C (mm)	SQ. 220	SQ. 325	SQ. 488
Dimension D (mm)	8.5 THRU	11 THRU	13 THRU
COILS	3	3	4
V (VA)	520	780	1500
DRIVE WEIGHT (kg)	55	140	200