



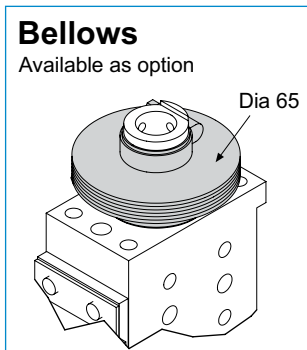
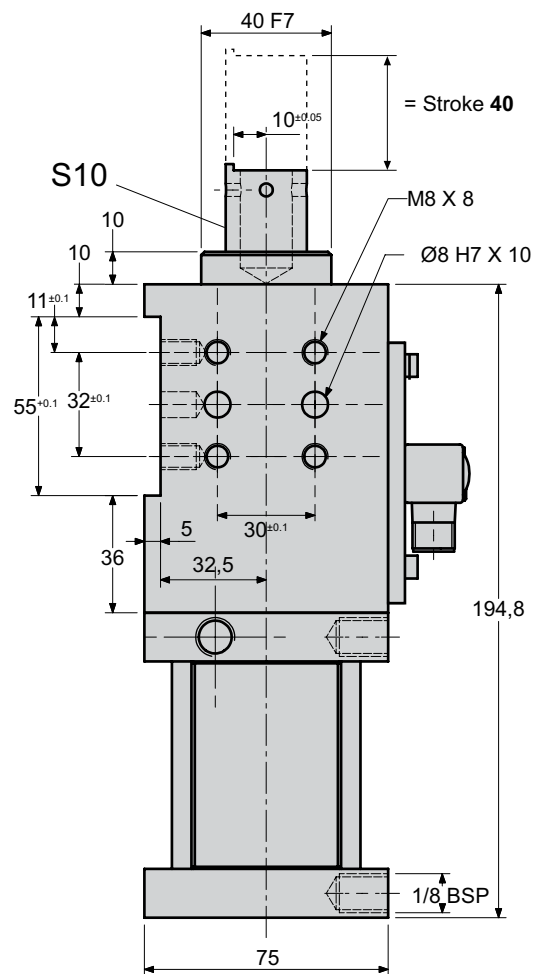
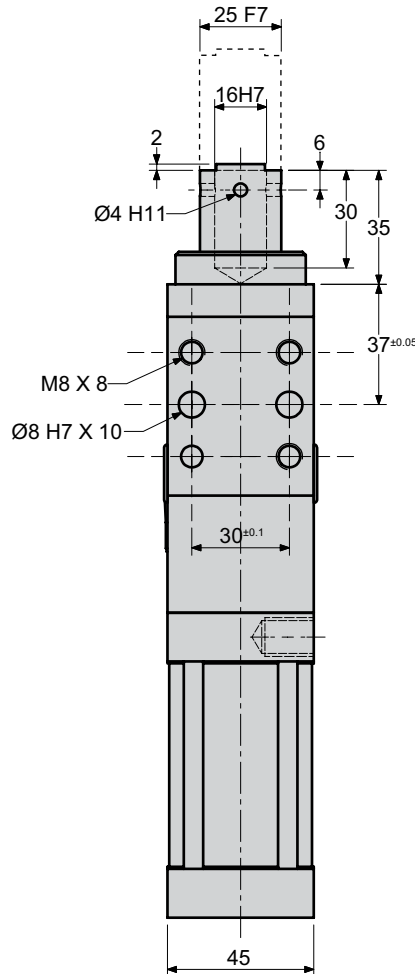
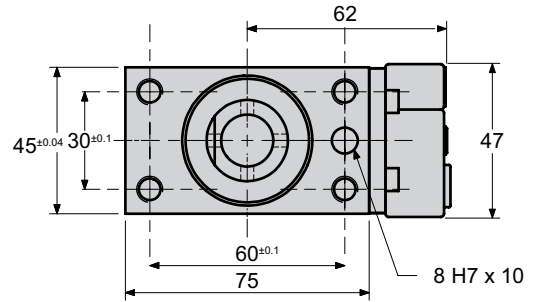
**Power Locator,  
40 bore, 40 stroke  
intergrated sensing,  
side mounting, anti-  
rotation.**

Maximum air pressure  
8 BAR  
Normal working 5 BAR  
Dry air is permissible  
Restricters must be used  
in conjunction with  
cylinder

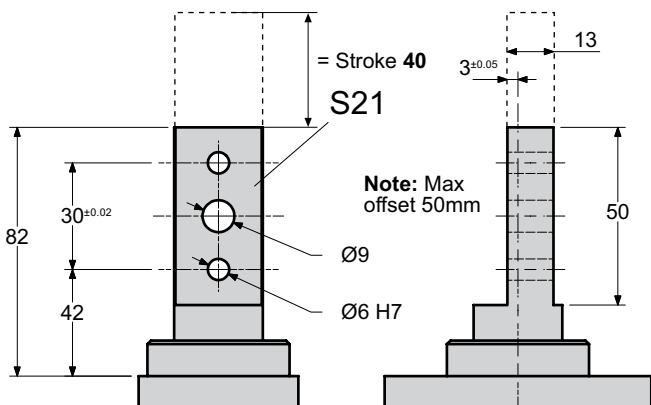
**Sensing options**  
NS No Sensing  
ES1 Inductive Switches

**PinType/Position:**  
Standard: S10  
Off-set pins: S21, S22, S23, S24

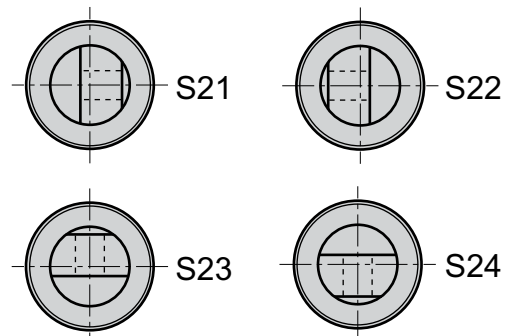
See order guide for further  
information



## Off-Set Pins

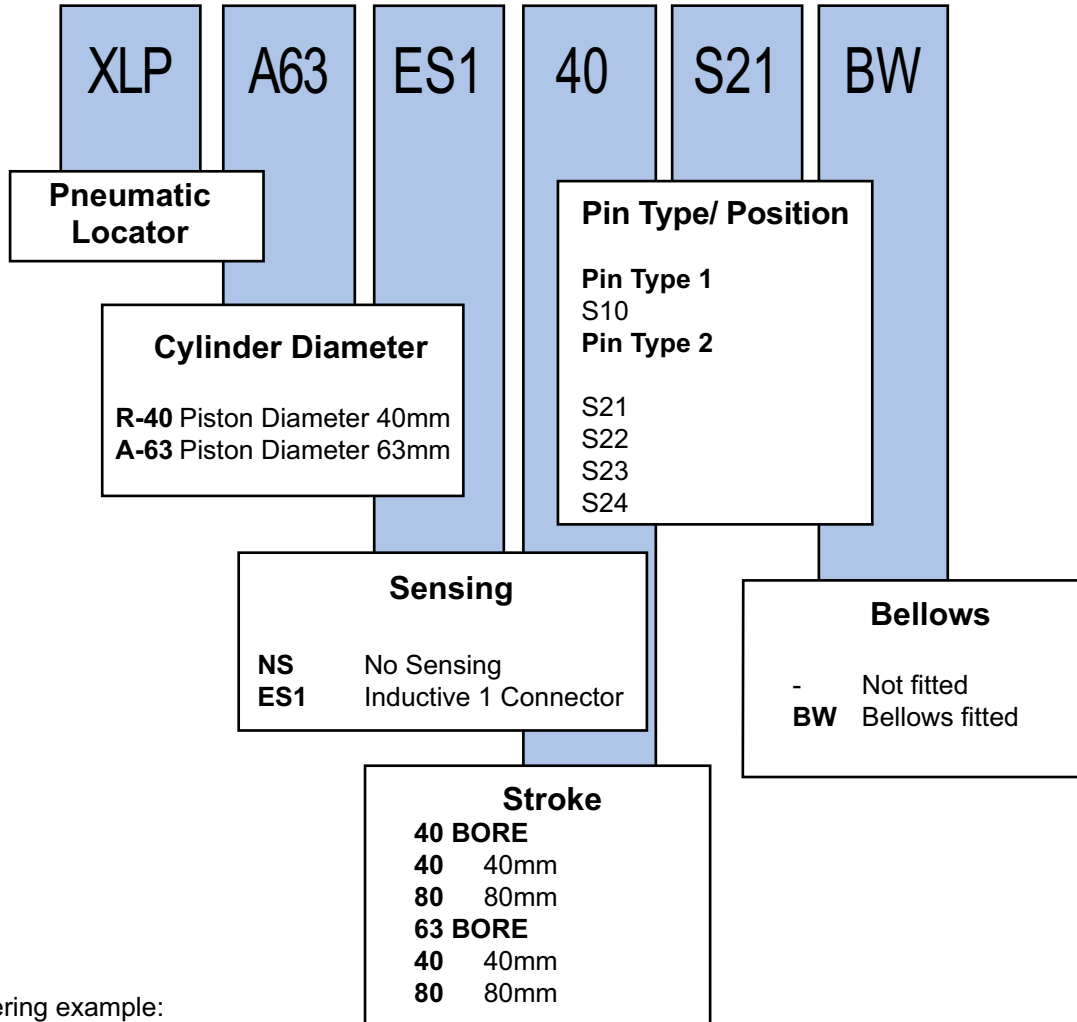


## Pins Type/Position



## Order code guide for XLP Pneumatic Locator products

Example showing the break down of the order code:



Ordering example:

**XLPA-63-ES1-40-S23**

**XLPA** Powered Locator  
**63** Cylinder Diameter 63mm  
**ES1** Inductive Sensing 1 Connector  
**40** Stroke 40mm  
**S23** Pin type 2 Position 3